



THE PROPERTY

2 | BEDROOMS 2 | BATHROOMS
2 | PUBLIC ROOMS

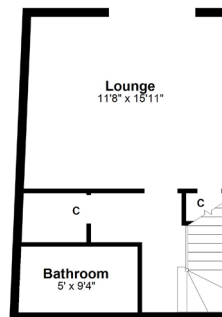
A charming traditional semi detached cottage positioned in the heart of the village adjacent to the River Gryffe offering spacious accommodation of four principal apartments with modern kitchen and bathrooms.

- Convenient village centre location
- landscaped shared gardens and communal off-road parking
- Modern fitted kitchen with appliances
- Spacious dining room
- Two double size bedrooms and modern family bathroom on the upper floor
- Lower ground floor second bathroom and family room
- Replacement modern triple glazing
- Gas central heating.

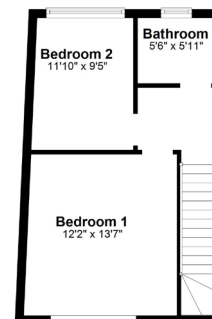




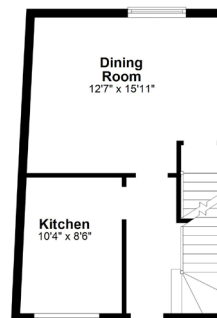
Ground Floor



Second Floor



First Floor



BW1661

Sat Nav: 2B Kilmacolm Road, Bridge of Weir, PA11 3PU

All measurements and distances are approximate.
Floorplans are for illustration purposes and may not be to scale.

For the full home report visit www.corumproperty.co.uk



WE'RE **SOLD** ON YOUR FUTURE

2 Windsor Place, Main Street, Bridge of Weir PA11 3AF
Tel: 01505 691 400 - Email: bridgeofweir@corumproperty.co.uk - Fax: 01505 691 409