



THE PROPERTY

2 | BEDROOMS 2 | BATHROOMS
1 | PUBLIC ROOM

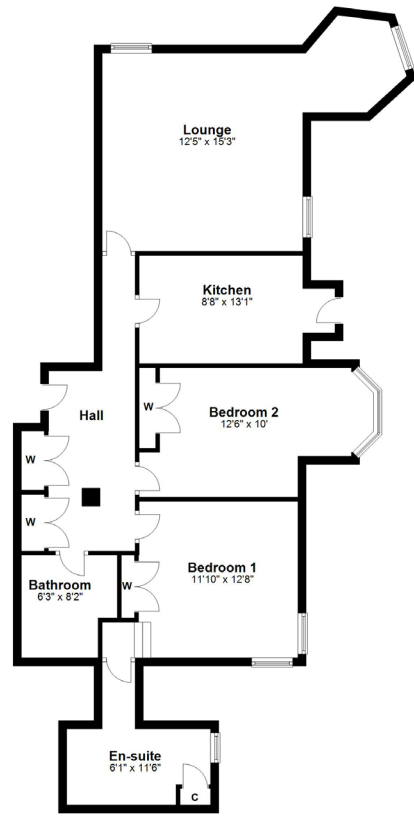
Stylish two bedroom lower apartment within the magnificent Auchenbothie House residential development on the outskirts of the village of Kilmacolm.

- Garden apartment in refurbished B listed mansion house
- Originally built circa 1898 by architect William Leiper
- Landscaped communal gardens
- Lounge with turreted dining area
- Fitted kitchen
- Master bedroom with wardrobe storage and en-suite shower room
- Second bedroom with a fitted wardrobe
- Family bathroom
- Gas central heating, double glazing and security entry system
- Single garage and allocated parking

Amenities

Kilmacolm is a highly sought after location within the heart of the Gryffe valley. The village offers a range of shops and facilities and is home to the prestigious St. Columba's School. For the commuting client Kilmacolm is a short distance from the A737 Johnstone bypass linking to the M8 motorway towards Glasgow International Airport and Glasgow city centre.





BW1704 | Sat Nav: 17 Auchenbothie Gardens, Kilmacolm. PA13 4SQ

All measurements and distances are approximate.
Floorplans are for illustration purposes and may not be to scale.

For the full home report visit www.corumproperty.co.uk



c o r u m

WE'RE **SOLD** ON YOUR FUTURE

2 Windsor Place, Main Street, Bridge of Weir PA11 3AF

Tel: 01505 691 400 - Email: bridgeofweir@corumproperty.co.uk - Fax: 01505 691 409