



1/2, 6 GARRIOCH CRESCENT
NORTH KELVINSIDE, GLASGOW

THE PROPERTY

1 | BEDROOM 1 | BATHROOM

1 | PUBLIC ROOM

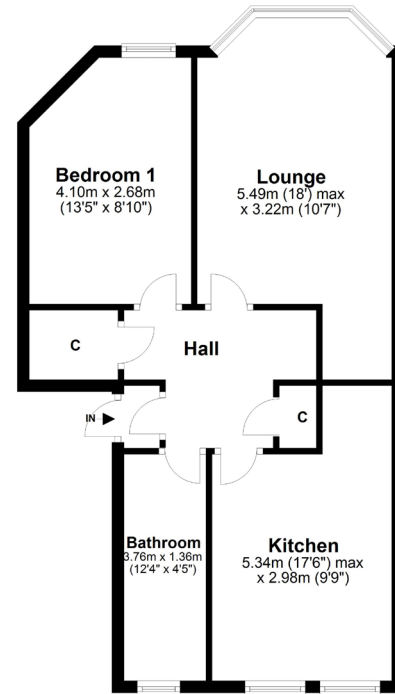
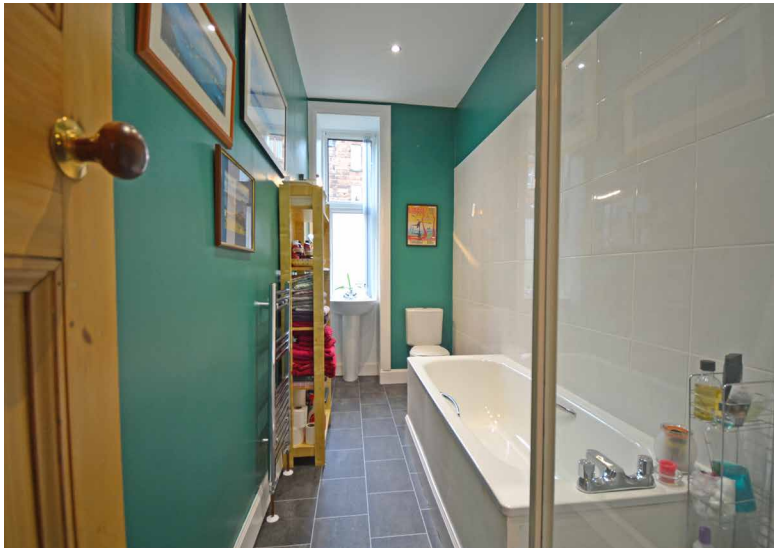
A wonderful, preferred first floor one bedroom tenement flat with fantastic communal residents gardens to the rear.

Number 6 Garrioch Crescent is a fantastic one bedroom tenement flat situated in the very popular North Kelvinside district close to the Kelvin Walkway and The Botanical Gardens. The property is initially entered via a secure entry system leading to a very well maintained residents common hall and provides access to the superb residents gardens to the rear, that offer a number of benches, grassed sitting areas and BBQ zone.

The accommodation comprises, welcoming reception hall, two storage cupboards off, large bay windowed lounge with a very useful recess area that has been utilised for a study space. There is a spacious dining kitchen, again, with recess for storage, or dining space. The large master bedroom to the front has ample space for wardrobes and finally there is a very well presented, traditional sized West End bathroom.

In addition the property has gas central heating, a brand new boiler and double glazing.





First Floor

WE3986

Sat Nav: 1/2, 6 Garrioch Crescent, North Kelvinside G20 8RR

All measurements and distances are approximate.
Floorplans are for illustration purposes and may not be to scale.

For the full home report visit www.corumproperty.co.uk



■ ■ ■
c o r u m

WE'RE **SOLD** ON YOUR FUTURE

82 Hyndland Road, G12 9UT

Tel: 0141 357 1888 - Email: westend@corumproperty.co.uk - Fax: 0141 357 1188