



**3 / 3, 15 PARK TERRACE**

**PARK, GLASGOW**

## THE PROPERTY

1 | BEDROOM      1 | BATHROOM

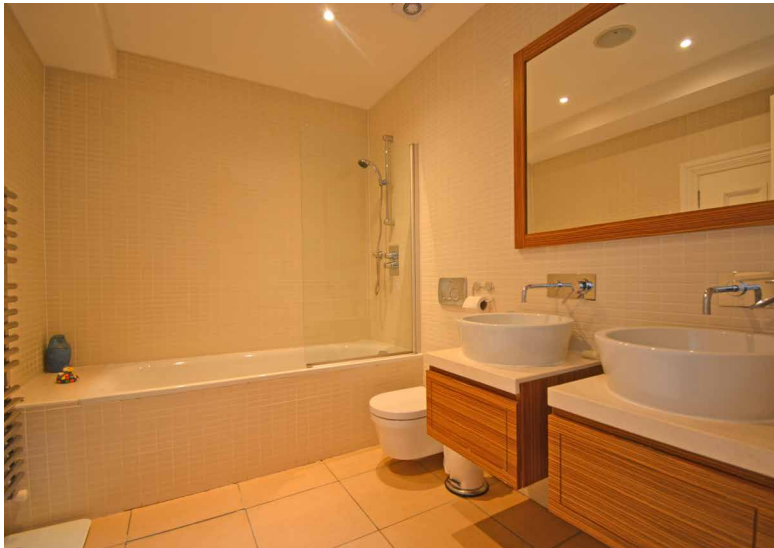
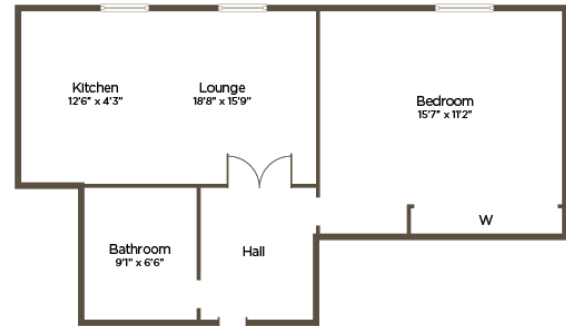
1 | PUBLIC ROOM

The top floor property at 15 Park Terrace is a wonderful apartment suitable for first time buyers and investors alike.

The flat has been well looked after and benefits from numerous features including gas fired central heating system, engineered hardwood flooring and luxury bathroom and kitchen fittings.

The accommodation is accessed from a grand communal entrance hallway and internally, the reception hallway leads to a spacious open plan living area with beautiful open views to Glasgow University, Kelvingrove Art Gallery and beyond to the Campsies. The contemporary Italian kitchen features top quality integrated appliances including Smeg fridge freezer, oven, microwave, washing machine and dish washer. There is a Gaggenau hob and a Liebherr wine cooler. The double bedroom, which has fitted wardrobes, also overlooks the University and park. Both the lounge and bedroom benefit from an integrated home sound system with ceiling speakers, wall controls and casting from a mobile device. Finally, the bathroom has twin, wall hung wash basins, WC and bath with shower over.





**WE4019**

Sat Nav: 15 Park Terrace, Park, Glasgow, G3 6BY

All measurements and distances are approximate.  
Floorplans are for illustration purposes and may not be to scale.

For the full home report visit [www.corumproperty.co.uk](http://www.corumproperty.co.uk)





c o r u m

WE'RE **SOLD** ON YOUR FUTURE

82 Hyndland Road, G12 9UT

Tel: 0141 357 1888 - Email: [westend@corumproperty.co.uk](mailto:westend@corumproperty.co.uk) - Fax: 0141 357 1188