



KERSLAND STREET



**MAIN DOOR, 38 KERSLAND STREET**  
HILLHEAD, GLASGOW

## THE PROPERTY

2 | BEDROOMS    2 | BATHROOMS

1 | PUBLIC ROOM

38 Kersland Street is a wonderful main door flat in the heart of the ever-popular Hillhead district of the West End. The property is in excellent condition throughout and has been extremely well looked after by the current proprietor.

The accommodation comprises; a stunning, welcoming reception hall with herringbone flooring and access to all principle apartments off. The main sitting room has dual aspects with a bay window onto Kersland Street and side window onto Cresswell Street. There is also a wonderful fire surround and feature fireplace. There are two very well-proportioned double bedrooms and a stylish family bathroom with separate shower and bath, plus a recently fitted, equally stunning shower room.

Finally, the dining kitchen benefits from a range of base and wall mounted units and a number of quality integrated appliances, and is situated to the rear of the flat with views over the residents' lovely communal gardens that are in excellent condition.

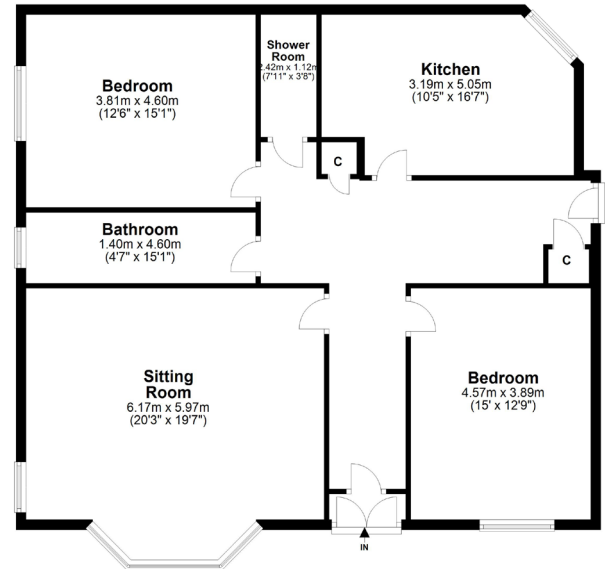
### Amenities

Hillhead is centrally located within the West End, close to Glasgow University. The main street, Byres Road, offers a wide selection of shops, cafés and supermarkets including Tesco Metro, Marks & Spencer and Waitrose.





### Ground Floor



**WE4043**

Sat Nav: 38 Kersland Street, Hillhead, Glasgow, G12 8BX

All measurements and distances are approximate.  
 Floorplans are for illustration purposes and may not be to scale.

For the full home report visit [www.corumproperty.co.uk](http://www.corumproperty.co.uk)





  
c o r u m

WE'RE **SOLD** ON YOUR FUTURE

82 Hyndland Road, G12 9UT

Tel: 0141 357 1888 - Email: [westend@corumproperty.co.uk](mailto:westend@corumproperty.co.uk) - Fax: 0141 357 1188