



# THE PROPERTY

4 | BEDROOMS    2 | BATHROOMS  
1 | PUBLIC ROOM

A substantial top floor tenement comprehensively refurbished and upgraded to an exacting standard

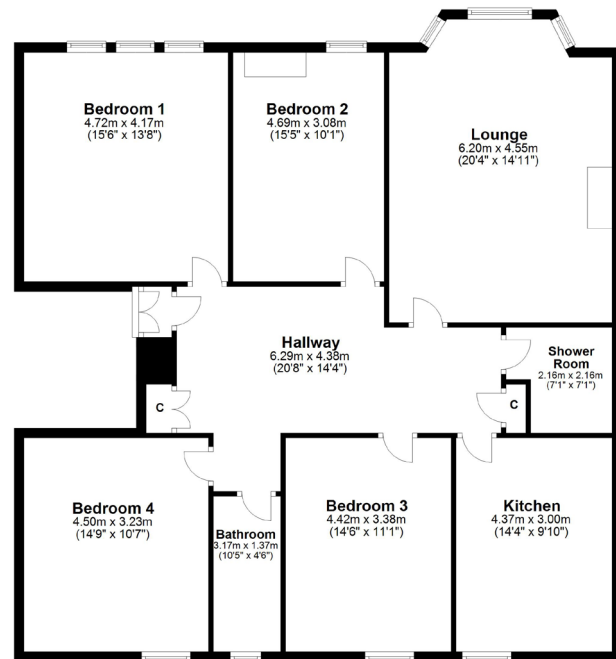
- Fully renovated/refurbished
- Bay windowed lounge
- Four double bedrooms
- Versatile layout
- Two bathrooms
- Gas central heating/double glazing
- Excellent transport and amenities

## Amenities

303 Maxwell Road is well placed for a host of transport links and amenities. A number of cafes and shops can be found on Maxwell Road, while Nithsdale Road and Strathbungo offer a fantastic mix of bars, restaurants and eateries.

More extensive amenities can be found at the local Sainsbury Store on Darnley Road, the Marks and Spencer at Queen's Park or the Morrison's at Crossmyloof. Silverburn shopping centre is a short drive to the west.





SS3657 | Sat Nav: 303 Maxwell Road, Pollokshields, G41 1TD

All measurements and distances are approximate.  
Floorplans are for illustration purposes and may not be to scale.

For the full home report visit [www.corumproperty.co.uk](http://www.corumproperty.co.uk)





c o r u m

WE'RE **SOLD** ON YOUR FUTURE

247 Kilmarnock Road Shawlands G41 3JF

Tel: 0141 636 7588 - Email: [shawlands@corumproperty.co.uk](mailto:shawlands@corumproperty.co.uk) - Fax: 0141 636 7589