



67A ST VINCENT CRESCENT

FINNIESTON, GLASGOW

THE PROPERTY

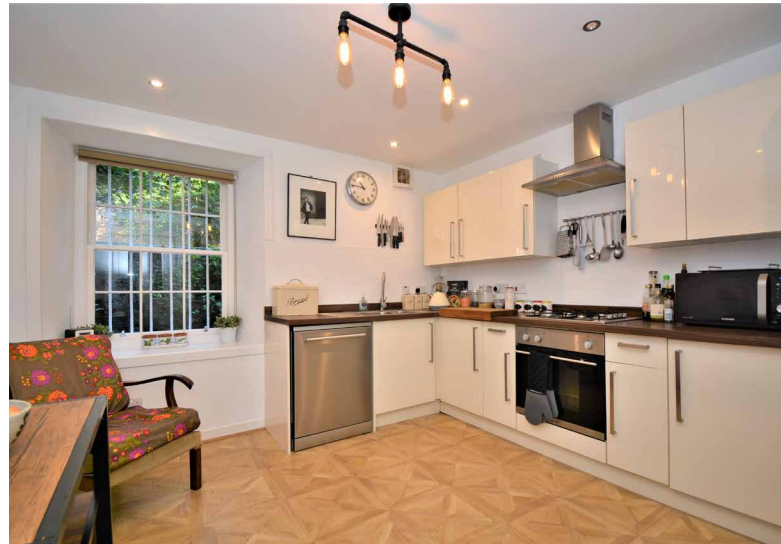
2 | BEDROOMS 1 | BATHROOM
1 | PUBLIC ROOM

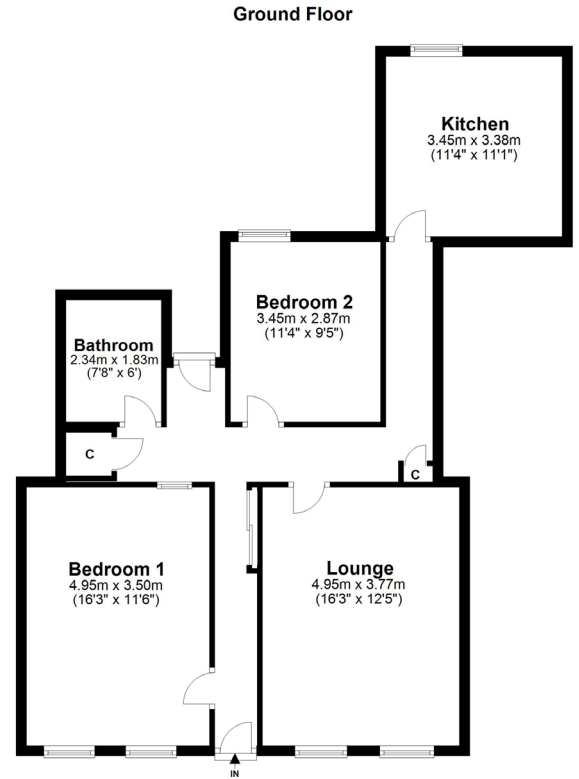
A stylish, two bedroom, garden flat within a handsome blonde sandstone A-Listed terrace with exclusive use of a south facing front patio area.

Offering spacious accommodation and located in the highly desirable Finnieston area, this flat comprises; large welcoming reception hallway with three good sized storage cupboards, which includes a utility cupboard and area that could be used as a study. An impressive bright south facing lounge with focal fireplace, timber frame sash and case style windows, stunning dining kitchen with integrated appliances including a dishwasher, two double sized bedrooms and a wonderful fully tiled bathroom. The flat benefits from access to the rear communal gardens, exclusive use of a south facing front patio area and the flat also has gas central heating.

Amenities

Today Finnieston has been promoted and built up as a modern residential and leisure area, mirroring Shoreditch in London. To this end many new bars and restaurants have been established, including The Ox & Finch, The Gannet, Six by Nico, The Kelvingrove Café, The Crab Shack and The Finnieston. Finnieston Street is a major junction on the Clydeside Expressway, and on 18th September 2006, was augmented with the addition of the Clyde Arc (known locally as "The Squinty Bridge") over the River Clyde.





WE4078

Sat Nav: 7A St Vincent Crescent, Finnieston, Glasgow, G3 8NQ

All measurements and distances are approximate.
Floorplans are for illustration purposes and may not be to scale.

For the full home report visit www.corumproperty.co.uk



■ ■ ■
c o r u m

WE'RE **SOLD** ON YOUR FUTURE

82 Hyndland Road, G12 9UT

Tel: 0141 357 1888 - Email: westend@corumproperty.co.uk - Fax: 0141 357 1188