



FLAT 1/2, 2 GREAT GEORGE LANE
HILLHEAD, GLASGOW

THE PROPERTY

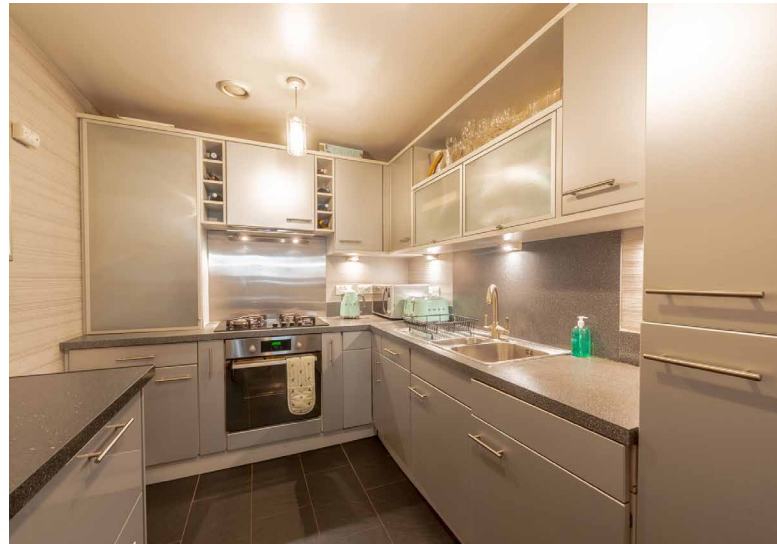
2 | BEDROOMS 2 | BATHROOMS
1 | PUBLIC ROOM

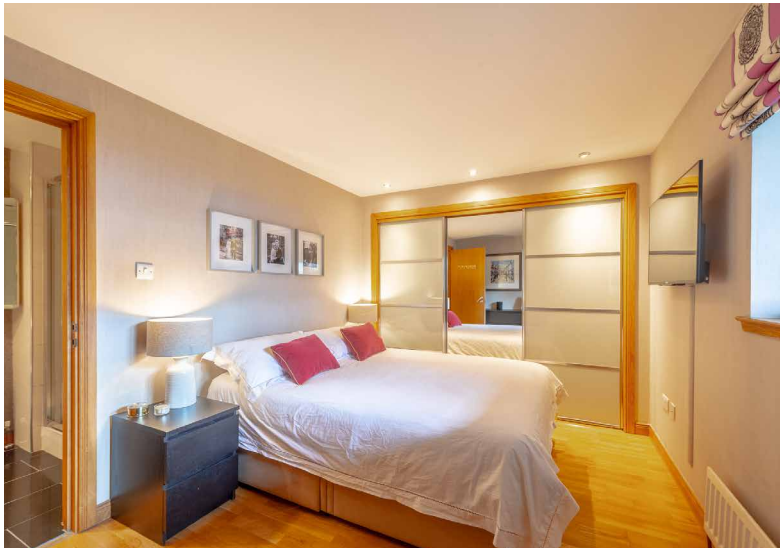
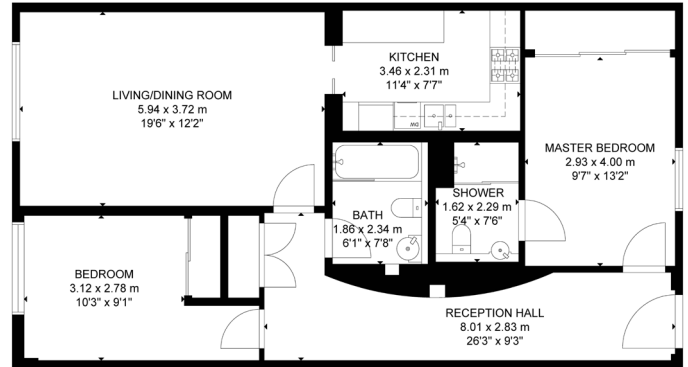
This attractively finished modern first floor apartment is conveniently situated to take advantage of the many shops, bars and restaurants that the West End has to offer. Hillhead subway station is located close by making it ideal for travel.

Access to the building is initially gained via a secure door entry system with lift and stair access to all levels. Internally the accommodation comprises; welcoming reception hallway complete with storage off, spacious lounge/dining room with a contemporary kitchen situated off via frosted sliding doors. The kitchen features a range of integrated appliances as well as a wealth of base and wall mounted storage. There are two substantial double bedrooms, both of which feature fitted storage and of which the master benefits from an en-suite complete with walk-in shower. There is a main family bathroom which comes complete with a three-piece suite in white and over-bath shower.

The apartment benefits from hardwood flooring throughout, contemporary décor, double glazing and gas central heating. Externally, there is a spacious first floor communal patio overlooking Ashton Lane.

The property further benefits from a communal roof terrace and Residents' permit parking is available on request at Glasgow City Council.





WE4164

Sat Nav: Flat 1/2, 2 Great George Lane, Hillhead, G12 8BB

All measurements and distances are approximate.
Floorplans are for illustration purposes and may not be to scale.

For the full home report visit www.corumproperty.co.uk



■ ■ ■
c o r u m

WE'RE **SOLD** ON YOUR FUTURE

82 Hyndland Road, G12 9UT

Tel: 0141 357 1888 - Email: westend@corumproperty.co.uk - Fax: 0141 357 1188