



THE PROPERTY

2 | BEDROOMS 2 | BATHROOMS

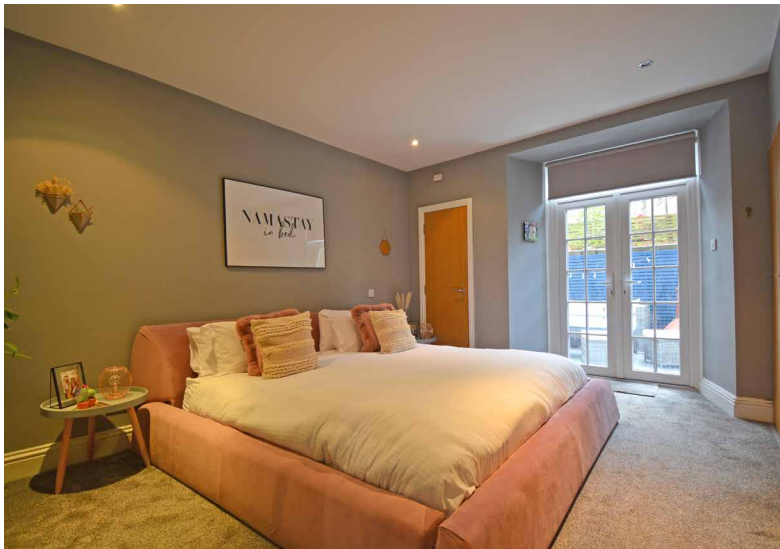
1 | PUBLIC ROOM

This superb and generously proportioned two-bedroom, main door, ground and garden conversion is located within an elegant townhouse, set in a much admired 'B' listed Victorian crescent, designed by Alexander Taylor, circa 1840.

The stylish interior, lovingly updated by the current owner, offers generous accommodation and extends to: main door and welcoming reception hall entered at garden level, two well-proportioned double bedrooms, master with beautiful en suite shower room and the second bedroom has access to an amazing private patio to the rear of the townhouse. There is an additional contemporary family bathroom and the ground floor level also offers incredible storage space. Upstairs there is a brand-new dining/kitchen with a range of integrated appliances and a superb formal drawing room with feature fireplace and wonderful ornate cornicework.

The property also has gas central heating and residents' permit parking can be obtained via Glasgow City Council.





WE4173

Sat Nav: 3A Royal Crescent, Park, G3 7SL

All measurements and distances are approximate.
 Floorplans are for illustration purposes and may not be to scale.

For the full home report visit www.corumproperty.co.uk



c o r u m

WE'RE **SOLD** ON YOUR FUTURE

82 Hyndland Road, G12 9UT

Tel: 0141 357 1888 - Email: westend@corumproperty.co.uk - Fax: 0141 357 1188