



3 / 1, 1 WHITTINGHAME PARK

JORDANHILL, GLASGOW

THE PROPERTY

2 | BEDROOMS 2 | BATHROOMS
1 | PUBLIC ROOMS

3/1, 1 Whittingehame Park is a fantastic, two-bedroom, top floor flat set within a modern development with private residents' parking and located in the highly popular Jordanhill district.

Access to the building is via residents-controlled entry system leading to an immaculate communal hallway. The internal accommodation comprises: welcoming reception hallway with storage cupboard, large bay window lounge, modern kitchen with plentiful supply of base and wall mounted units; two spacious double bedrooms both benefiting from built in storage cupboards and the master further enhanced by an en suite shower and WC. Finally, there is a family bathroom with over bath shower which completes the accommodation on offer.

The flat has gas central heating, double glazing, secure entry system, private residents' parking and communal grounds.

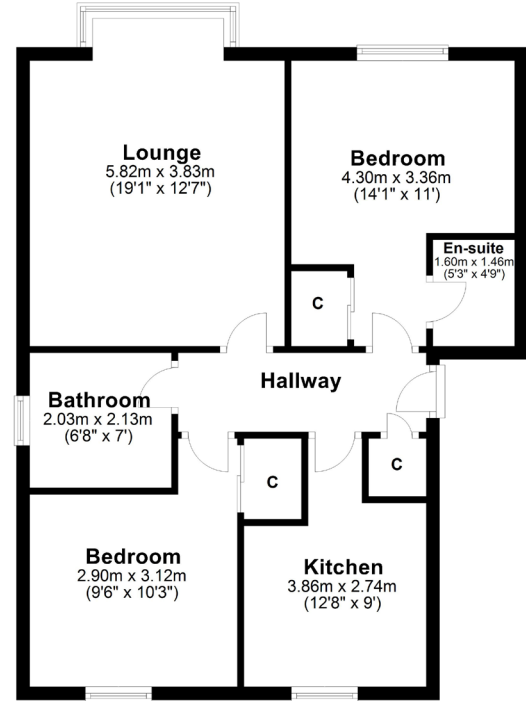
Amenities

Jordanhill is an extremely popular West End suburb, with excellent local primary and secondary education at Jordanhill School. There are excellent sporting facilities, including Woodend Bowling & Tennis Club, where Corum are proud sponsors, and Hillhead Jordanhill Rugby Club, based at Hughenden.





Top Floor



WE4174

Sat Nav: 3/1, 1 Whittingehame Park, Jordanhill, G12 0NJ

All measurements and distances are approximate.
Floorplans are for illustration purposes and may not be to scale.

For the full home report visit www.corumproperty.co.uk



■ ■ ■
c o r u m

WE'RE **SOLD** ON YOUR FUTURE

82 Hyndland Road, G12 9UT

Tel: 0141 357 1888 - Email: westend@corumproperty.co.uk - Fax: 0141 357 1188