



# THE PROPERTY

4 | BEDROOMS    3 | BATHROOMS  
1 | PUBLIC ROOM

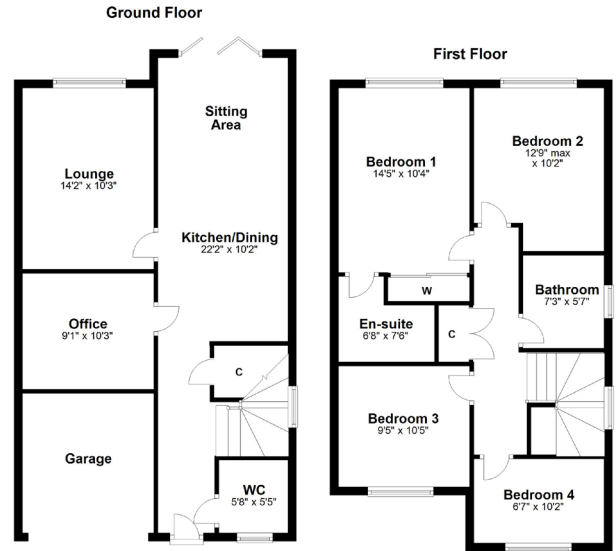
**Stunning four bedroom detached villa by renowned builders 'Avant Homes' with South facing rear gardens in the popular Dargavel Village development in Bishopton.**

- Stunning detached 'Avant Home'
- Contemporary open plan layout and separate lounge
- Fitted kitchen with integral appliances
- Four bedrooms
- Family bathroom, en suite and WC
- Drive way and enclosed level rear garden
- Gas central heating and double glazing
- Integral garage

## Amenities

This property offers a convenient setting for accessing all amenities within Bishopton. The local primary school can be found nearby and secondary schooling can be found in nearby Erskine. Bishopton is also well placed for accessing Glasgow International Airport and the M8 motorway which allows for travel to neighbouring towns as well as INTU Retail Park, Glasgow city centre and the A737 Howwood bypass which allows for travel to North Ayrshire.





**BW1831** | Sat Nav: 19 Nairn Drive, Bishopton, PA7 5GE

All measurements and distances are approximate.  
Floorplans are for illustration purposes and may not be to scale.

For the full home report visit [www.corumproperty.co.uk](http://www.corumproperty.co.uk)



■ ■ ■  
c o r u m

WE'RE **SOLD** ON YOUR FUTURE

2 Windsor Place, Main Street, Bridge of Weir PA11 3AF

Tel: 01505 691 400 - Email: [bridgeofweir@corumproperty.co.uk](mailto:bridgeofweir@corumproperty.co.uk)