



THE PROPERTY

1 | BEDROOM 1 | BATHROOM
1 | PUBLIC ROOM

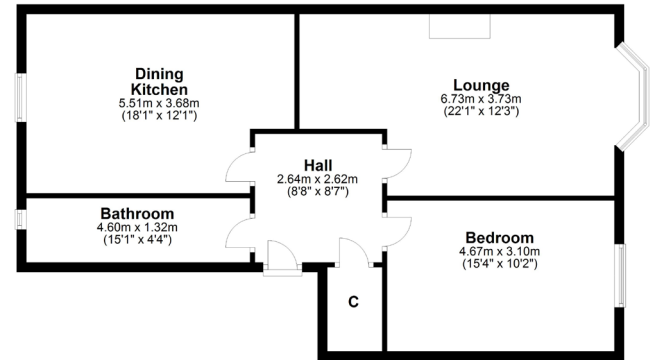
This beautiful first floor flat enjoys a quiet yet highly convenient location for all nearby facilities and amenities. The property comes to the market in walk in condition after being fully upgraded by the current owners.

- First floor
- Dining Kitchen
- Working Fireplace
- Large Lounge
- Double Bedroom
- Walk-in condition
- Residents gardens

Amenities

Edgemont Street is a short walk from a wide range of local shops and amenities in Shawlands where popular restaurants, bars and delicatessens can be found. More extensive facilities are available at the Morrison store at Crossmyloof or Newlands, the Marks & Spencer store on Pollokshaws Road or the Silverburn shopping centre at Pollok. The hugely popular Queen's Park is just around the corner where nature walks, football pitches, tennis courts and a fortnightly farmers market can be found.





SS3719 | Sat Nav: 13 Edgemont Street, Shawlands, G41 3EH

All measurements and distances are approximate.
Floorplans are for illustration purposes and may not be to scale.

For the full home report visit www.corumproperty.co.uk



corum

WE'RE **SOLD** ON YOUR FUTURE

247 Kilmarnock Road Shawlands G41 3JF

Tel: 0141 636 7588 - Email: shawlands@corumproperty.co.uk - Fax: 0141 636 7589