




C O R U M

1/2, 16 MELVILLE STREET
POLLOKSHIELDS

THE PROPERTY

2 | BEDROOMS 1 | BATHROOM
1 | PUBLIC ROOM

A lovely first floor flat located in a highly popular and convenient Pollokshields address.

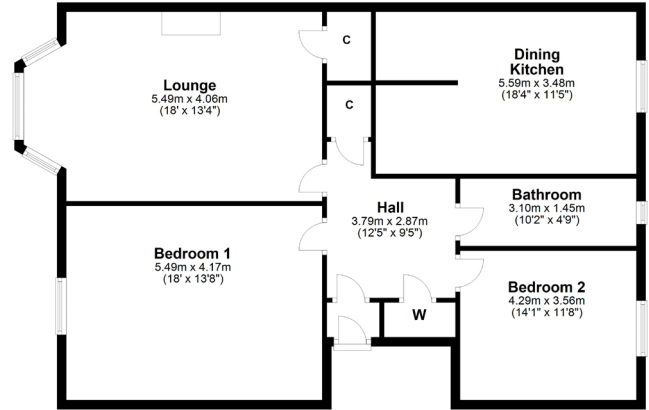
- Two double bedrooms
- Dining kitchen
- Extensive storage space
- Security entrance system
- Communal residents garden

Amenities

The property is positioned within walking distance of shops and amenities upon Nithsdale Road and Kildrostan Street and a further short walk to the beating heart of Strathbungo where thriving coffee shops, restaurants and delicatessens can be found. More extensive amenities are available at the Marks and Spencer's store at Queens Park, the Sainsburys Local on Darnley Road, the Morrisons store at Crossmyloof, Giffnock or Newlands and The Avenue shopping mall in Newton Mearns. The shopping mall at Silverburn is a short drive to the West.

Public transport services are in plentiful supply such as Pollokshields East and West train stations, bus routes on Pollokshaws Road and Shields Road underground station with its 'park and ride' facility.





SS3751 | Sat Nav: 16 Melville Street, Pollokshields, G41 2LW

All measurements and distances are approximate.
Floorplans are for illustration purposes and may not be to scale.

For the full home report visit www.corumproperty.co.uk




c o r u m

WE'RE **SOLD** ON YOUR FUTURE

247 Kilmarnock Road Shawlands G41 3JF
Tel: 0141 636 7588 - Email: shawlands@corumproperty.co.uk - Fax: 0141 636 7589