



9 WELLTREES SQUARE

MAYBOLE



C O R U M

www.corumproperty.co.uk



9 WELLTREES SQUARE, MAYBOLE

2 | BEDROOMS 1 | BATHROOM 2 | PUBLIC ROOMS

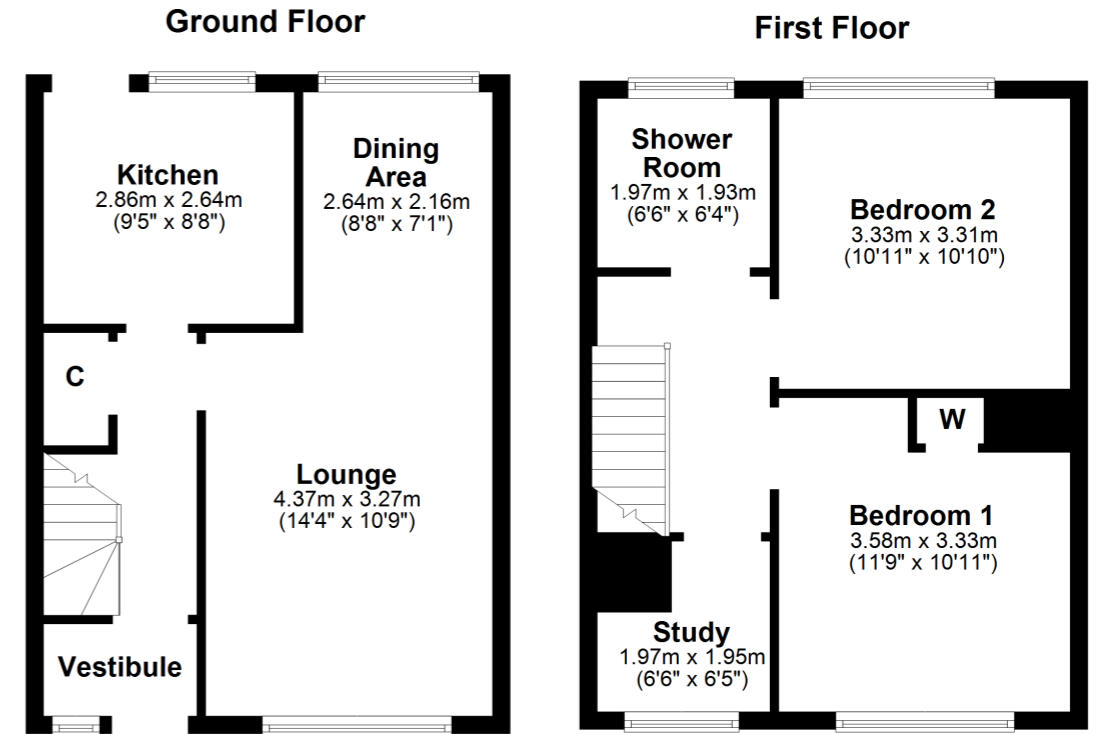
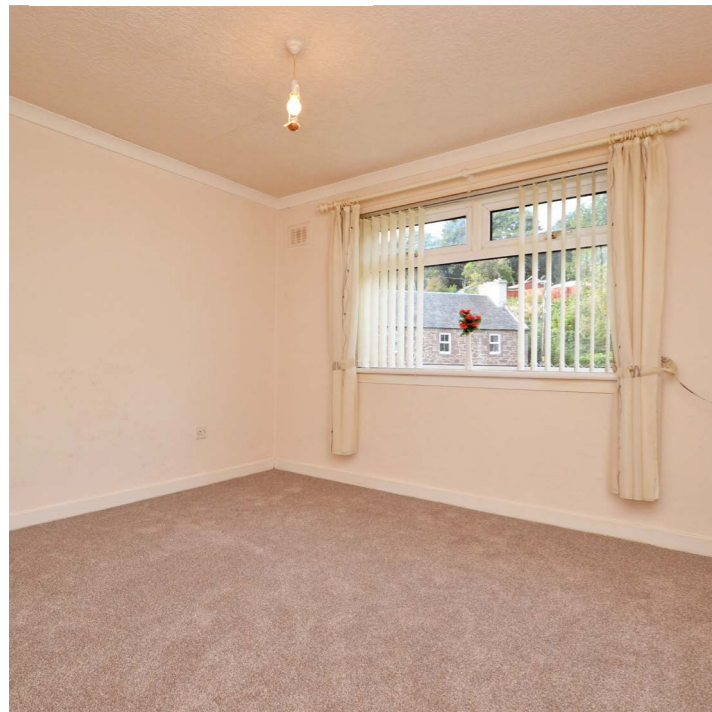
A spacious end terraced family home that offers excellent living space, off road parking and private gardens in the popular town of Maybole.

Welltrees Square is a quiet and popular location within Maybole, with an open outlook over public green space at the front and within walking distance of both the town and stunning countryside walks. Number 9 is a well-presented end terraced family home that offers an impressive level of living space and accommodation that will suit a range of potential buyers. There is ample storage, newly laid carpets throughout and double glazing. The property also has landscaped garden grounds to the front and rear, with a driveway to the side, and views out to rolling Ayrshire countryside from the upper rear windows.

In more detail, the internal accommodation extends to an entrance vestibule, a hallway with under stairs storage and stairs leading to the upper apartments, a spacious lounge that is open plan into a dining area and a fitted kitchen with a door leading out to the rear garden. On the upper floor there are two large double bedrooms, a smaller box room, loft access and a tiled shower room suite.

Externally the gardens to the front are enclosed with decorative pebbles and a paved pathway. The rear garden has access to a driveway at the side and is laid with paving, decorative pebbles and there is also a garden shed.





Local Area

Maybole is a popular town, with a range of local amenities, located just 7 miles from the market town of Ayr, which offers a comprehensive range of amenities including excellent schooling, retail shopping and leisure facilities. The A77 links via the M77 to Glasgow and Welltrees Square is within walking distance of Maybole train station, which also links to Ayr, Glasgow and beyond. South Ayrshire is home to some of the world's finest golf courses and resorts, including the nearby Trump Turnberry and Royal Troon, both hosts of the Open Championship. Prestwick International Airport is only 16 miles away, with flights to many destinations throughout Europe.

AY3878 | Sat Nav: 9 Welltrees Square, Maybole, KA19 7AT

* All measurements and distances are approximate Floorplans are for illustration purposes and may not be to scale.



WE'RE **SOLD** ON YOUR FUTURE

Corum Ayr
14 Beresford Terrace, Ayr KA7 2EG

Tel: 01292 880 888
Fax: 01292 613 588
Email: ayr@corumproperty.co.uk

www.corumproperty.co.uk


c o r u m