



# THE PROPERTY

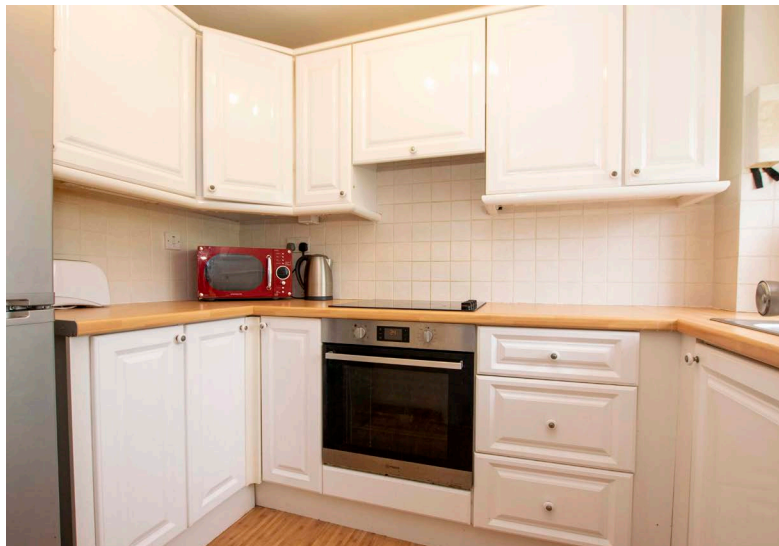
2 | BEDROOMS    1 | BATHROOM  
1 | PUBLIC ROOM

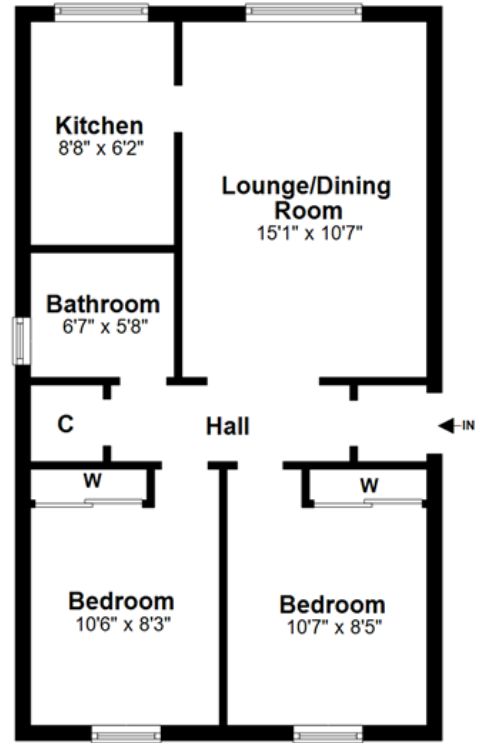
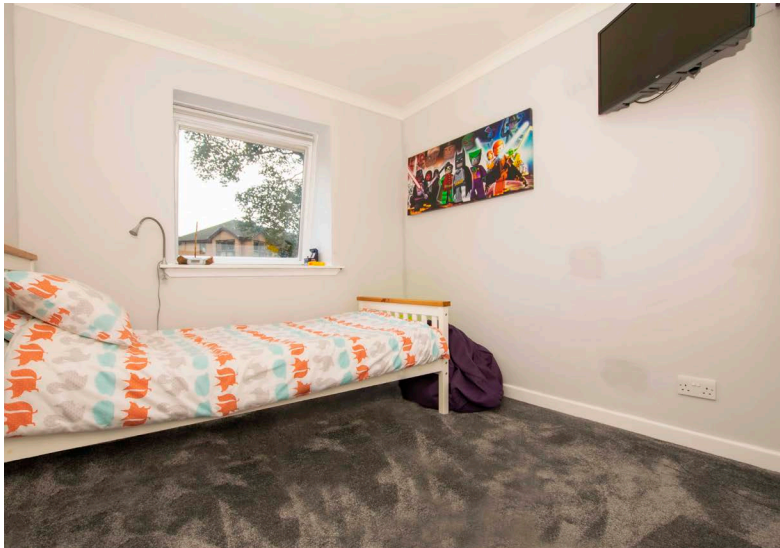
**Set within a wonderfully secluded and sought after development, Killermont View borders the grounds of the historic Glasgow Golf Club and sits adjacent to the River Kelvin.**

This top floor, two bedroom apartment provides ease of access to both Bearsden and Milngavie as well as Glasgow's West End, City Centre and Glasgow International Airport.

Along with its proximity to local amenities, the property maintains a superbly tranquil ambiance. Killermont View is a unique development that benefits from a peaceful setting and residents fondly describe the surrounding grounds being a sanctuary for local wildlife. The accommodation on offer extends to:

- Entrance hallway with storage and glazed window to allow for natural light
- Spacious lounge with neutral décor and wonderfully bright outlook
- Fitted kitchen benefitting from plentiful storage
- Two well-proportioned double bedrooms with built-in storage
- Bathroom with bath and over bath shower
- Double glazing
- Electric heating
- Communal drying area
- Residents' off street parking





BD3329 | Sat Nav: 5 Killermont View, by Bearsden, Glasgow G20 0TZ

All measurements and distances are approximate.  
Floorplans are for illustration purposes and may not be to scale.

For the full home report visit [www.corumproperty.co.uk](http://www.corumproperty.co.uk)



c o r u m

WE'RE **SOLD** ON YOUR FUTURE

4 Canniesburn Toll, Bearsden G61 2QU

Tel: 0141 942 5888 - Email: [bearsden@corumproperty.co.uk](mailto:bearsden@corumproperty.co.uk) - Fax: 0141 943 2288