



THE PROPERTY

2 | BEDROOMS 1 | BATHROOM
1 | PUBLIC ROOM

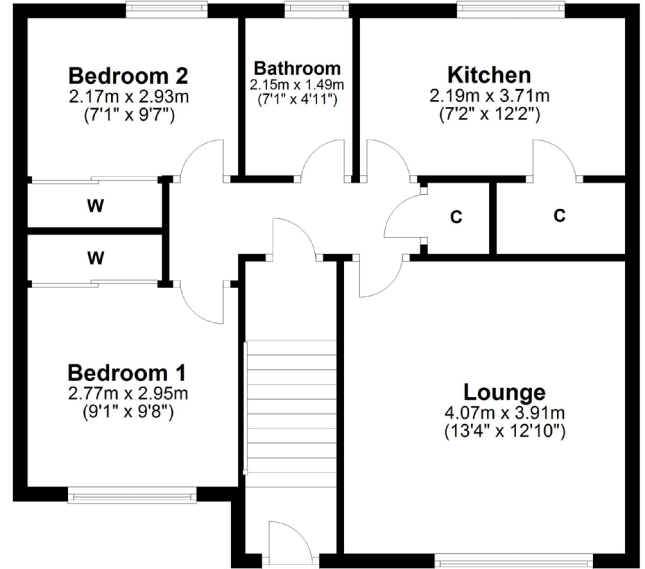
A well presented modern main door two bedroom upper floor flat with a private garden and allocated parking in this popular area of Houston.

- Modern first floor flat with main door access
- Private gardens with patio, lawn and gardens shed
- Private stair to upper hall, spacious lounge
- Modern fitted kitchen, tiled bathroom
- Two bedrooms with fitted wardrobes
- Gas fired central heating, double glazing

Amenities

The conservation village of Houston is popular with commuters with good road links via the A737 to the M8 motorway network. Johnstone railway station has regular services to Glasgow city centre and the Clyde coast. Houston has excellent local schooling at Nursery, Primary and Secondary levels including the sought after Gryffe High School. There are several golf courses in the local area, equestrian facilities at Ingliston, a bowling club and Strathgryffe Tennis, Squash and Fitness Centre.





BW1958 | Sat Nav: 18 Locher Crescent, Houston, PA6 7NP

All measurements and distances are approximate.
Floorplans are for illustration purposes and may not be to scale.

For the full home report visit www.corumproperty.co.uk



c o r u m

WE'RE **SOLD** ON YOUR FUTURE

2 Windsor Place, Main Street, Bridge of Weir PA11 3AF

Tel: 01505 691 400 - Email: bridgeofweir@corumproperty.co.uk