



GARDEN FLAT, ROSEMOUNT

HAZELWOOD ROAD, BRIDGE OF WEIR

THE PROPERTY

2 | BEDROOMS 1 | BATHROOM
1 | PUBLIC ROOM

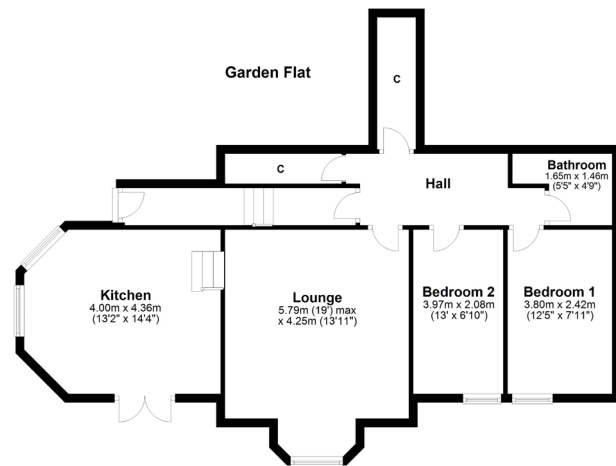
A charming, two bedroom garden apartment formed within an elegant traditional building (circa 1877) and featuring mature private gardens and parking.

- Elegant main door garden apartment in traditional villa
- Mature private gardens with decking area for outdoor dining
- Lovely location in the upper village of Bridge of Weir
- Reception hall, inner hall with two deep store cupboards
- Large lounge, fitted dining kitchen with French doors
- Two bedrooms, bathroom, gas ch, double glazing

Amenities

Bridge of Weir has good road links towards the M8 motorway, Glasgow International Airport and Glasgow city centre. The village offers a wide range of local amenities including restaurants, shops and a library. The village has a popular Primary School with a nursery and secondary education is at the prestigious Gryffe High School. There is also private schooling nearby at St. Columba's in Kilmacolm. The village has two 18 hole golf courses and there is fishing available on the River Gryffe.





BW1959 | Sat Nav: Hazelwood Road, Bridge of Weir, PA11 3DB

All measurements and distances are approximate.
Floorplans are for illustration purposes and may not be to scale.

For the full home report visit www.corumproperty.co.uk



WE'RE **SOLD** ON YOUR FUTURE

2 Windsor Place, Main Street, Bridge of Weir PA11 3AF

Tel: 01505 691 400 - Email: bridgeofweir@corumproperty.co.uk