





corum



## 50 SOUTH STREET, HOUSTON

3 | BEDROOMS    3 | BATHROOMS    3 | PUBLIC ROOMS

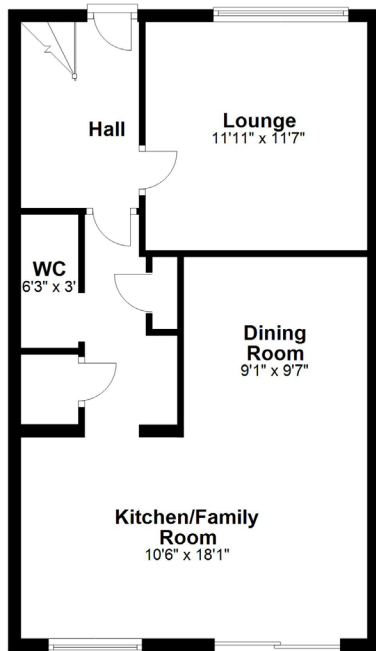
**Impressive family accommodation within this extended and redeveloped three-bedroom end terraced villa in the heart of the original village of Houston.**

A stunning family home positioned on South Street within the heart of the original village of Houston. An established residential area opposite South Street Park and convenient for the local village amenities, both primary schools and Gryffe high school. This stylish home is set in private gardens including a front lawn with display beds and a driveway providing off-road parking for several vehicles. There are sheds providing storage and a detached timber home office. The enclosed rear gardens have artificial grass and a patio.

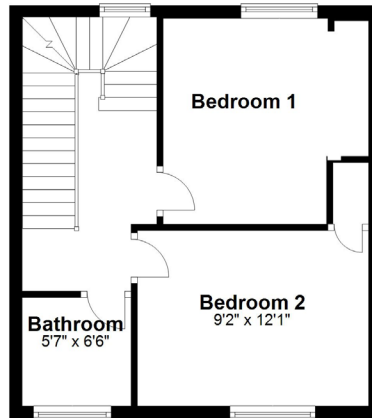
The accommodation within this home has been enhanced by a rear extension and conversion of the former attic area. It now offers spacious and flexible accommodation of six principal apartments formed over three levels, presented in excellent decorative order. The rear extension contains a stunning modern kitchen open plan to both the family room area and dining room. It is bathed in natural light from rear windows and ceiling mounted Velux windows. There is modern sanitary ware within the cloakroom/WC, first-floor bathroom and the en-suite shower room. The specification of this home includes a gas-fired central heating system complemented by a wood burning stove and double glazing.

The accommodation comprises of a reception hallway with stairs leading to the upper floor, lounge with a fireplace with a woodburning stove and twin glazed doors leading into the dining room. The dining room is open plan to the family room/kitchen. An inner hall leads from the extension to the reception hallway with utility cupboard and cloakroom/WC. The first floor has a central hallway with stairs leading to the converted attic, two double bedrooms with wardrobe storage and a modern family bathroom. The third bedroom is positioned in the attic level of the property with Velux windows to front and rear and an en-suite shower room.

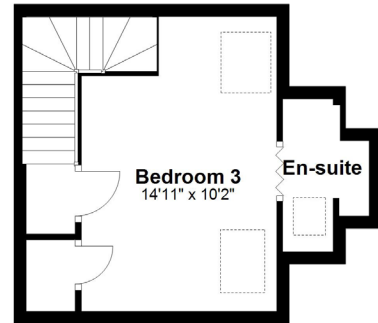
**Ground Floor**



**First Floor**



**Second Floor**





corum





## **LOCAL AREA & AMENITIES**

The conservation village of Houston is popular with commuters with good road links via the A737 to the M8 motorway network. Johnstone railway station has regular services to Glasgow city centre and the Clyde coast. Houston has excellent local schooling at Nursery, Primary and Secondary levels including the sought after Gryffe High School. There are several golf courses in the local area, equestrian facilities at Ingliston, a bowling club and Strathgryffe Tennis, Squash and Fitness Centre.

For The Full Home Report Visit:

**[WWW.CORUMPROPERTY.CO.UK](http://WWW.CORUMPROPERTY.CO.UK)**



■ ■ ■  
c o r u m

WE'RE **SOLD** ON YOUR FUTURE

2 Windsor Place, Main Street, Bridge of Weir PA11 3AF

Tel: 01505 691 400 - Email: [bridgeofweir@corumproperty.co.uk](mailto:bridgeofweir@corumproperty.co.uk)