



THE PROPERTY

2 | BEDROOMS 1 | BATHROOM
2 | PUBLIC ROOMS

A delightful end terrace villa with recently landscaped garden and presented in true walk-in condition throughout.

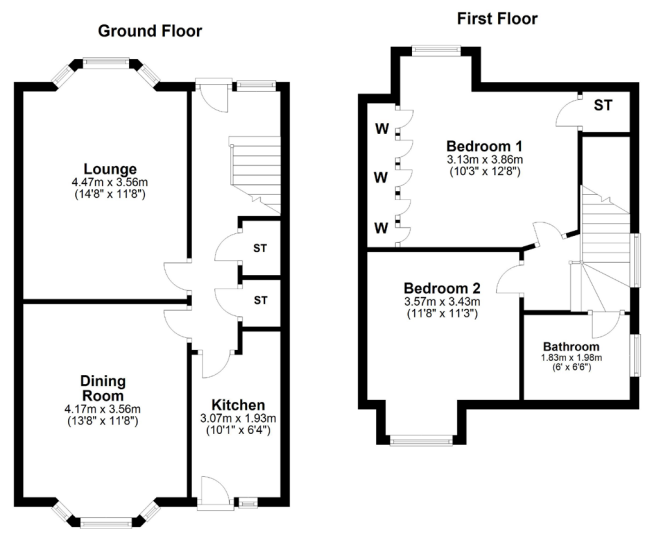
- Long hallway with storage
- 2 large public rooms
- Stunning kitchen with integrated appliances
- 2 bedrooms and modern bathroom
- Gas central heating and double glazed
- Driveway and garage
- Professionally landscaped enclosed rear gardens

Amenities

The property is positioned within walking distance of shops and amenities upon Castlemilk Road and Aitkenhead Road and further afield at Langside/Battlefield where thriving coffee shops, restaurants and delicatessens can be found. More extensive amenities are available at the local Asda store in Toryglen and the Morrisons stores at Crossmyloof, Giffnock or Newlands.

Recreational pursuits are varied including well maintained municipal parks, health clubs/gyms, golf courses both public and private, Linn Park is a short walk to the South West.





SS3955 | Sat Nav: 46 Kingsacre Road, Kingspark, Glasgow, G44 4LP

All measurements and distances are approximate.
 Floorplans are for illustration purposes and may not be to scale.

For the full home report visit www.corumproperty.co.uk




c o r u m

WE'RE **SOLD** ON YOUR FUTURE

247 Kilmarnock Road Shawlands G41 3JF

Tel: 0141 636 7588 - Email: shawlands@corumproperty.co.uk - Fax: 0141 636 7589