



# THE PROPERTY

2 | BEDROOMS    1 | BATHROOM  
1 | PUBLIC ROOM

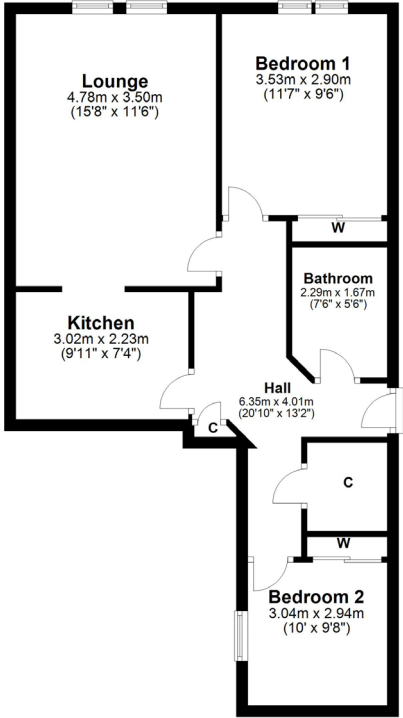
**This terrific two bedroom flat is bang smack in the heart of Shawlands and available for immediate entry with a rare, designated parking space.**

- Bright second floor flat
- Two bedrooms with storage
- Lounge with hatch to kitchen
- Designated parking space
- Central Shawlands address
- Available for immediate entry

## Amenities

6 Deanston Drive is in close proximity to thriving shops, bars, coffee houses and restaurants in Shawlands. Both Morrisons, Co-op and an M&S store are within half a mile of the property. Queens Park is a short distance away hosting a Farmers' Market on the 1st and 3rd Saturday of each month whilst recreational space, tennis courts and football pitches are readily available. Shawlands Civic Square is also around the corner, designed to offer a destination for markets, dance, craft events, speakers and debate.





**SS3962** | Sat Nav: 6 Deanston Drive, Shawlands, G41 3AE

All measurements and distances are approximate.  
 Floorplans are for illustration purposes and may not be to scale.

For the full home report visit [www.corumproperty.co.uk](http://www.corumproperty.co.uk)



c o r u m

WE'RE **SOLD** ON YOUR FUTURE

247 Kilmarnock Road Shawlands G41 3JF

Tel: 0141 636 7588 - Email: [shawlands@corumproperty.co.uk](mailto:shawlands@corumproperty.co.uk) - Fax: 0141 636 7589