



**43 THORNCLIFFE GARDENS**  
STRATHBUNGO

# THE PROPERTY

3 | BEDROOMS    1 | BATHROOM  
2 | PUBLIC ROOMS

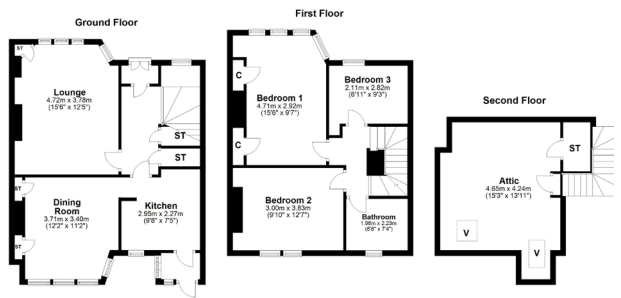
Positioned in beautifully tended private garden grounds in the heart of Strathbungo, this sandstone fronted mid terrace villa has been well maintained by the current owners throughout their tenure.

- Traditional mid terrace villa
- Three generous bedrooms
- Floored and lined attic with fixed stair
- South West facing rear gardens and garage
- 300 yards to Queens Park
- Thriving local amenities

## Amenities

43 Thorncliffe Gardens is found in the thriving Southside community of Strathbungo where independent restaurants, delicatessens, bars and coffee houses are all within walking distance. Queens Park is approximately 300 yards away providing recreational space, tennis courts and football pitches. Crossmyloof, Pollokshields West and Queens Park train stations are within half a mile of the front door.





SS3968 | Sat Nav: 43 Thorncliffe Gardens, Strathbungo, G41 2DE

All measurements and distances are approximate.  
 Floorplans are for illustration purposes and may not be to scale.

For the full home report visit [www.corumproperty.co.uk](http://www.corumproperty.co.uk)



c o r u m

WE'RE **SOLD** ON YOUR FUTURE

247 Kilmarnock Road Shawlands G41 3JF

Tel: 0141 636 7588 - Email: [shawlands@corumproperty.co.uk](mailto:shawlands@corumproperty.co.uk) - Fax: 0141 636 7589