



APT 9 CRAIGHOUSE

CROSSHOUSE



c o r u m

www.corumproperty.co.uk



APT 9 CRAIGHOUSE, CROSSHOUSE

3 | BEDROOMS **2** | BATHROOMS **1** | PUBLIC ROOM

An elegant, spacious and immaculately presented first floor apartment in 'Craig House' a B-listed neo-classical mansion house surrounded by rolling Ayrshire countryside.

Apartment 9 enjoys a fabulous elevated position with entry from the principle reception hallway of the original house. The apartment is presented in true walk-in condition having been upgraded and modernised by the current owners and provides all the conveniences one would expect from a modern property which are combined with a plethora of period features to create a truly stunning home.

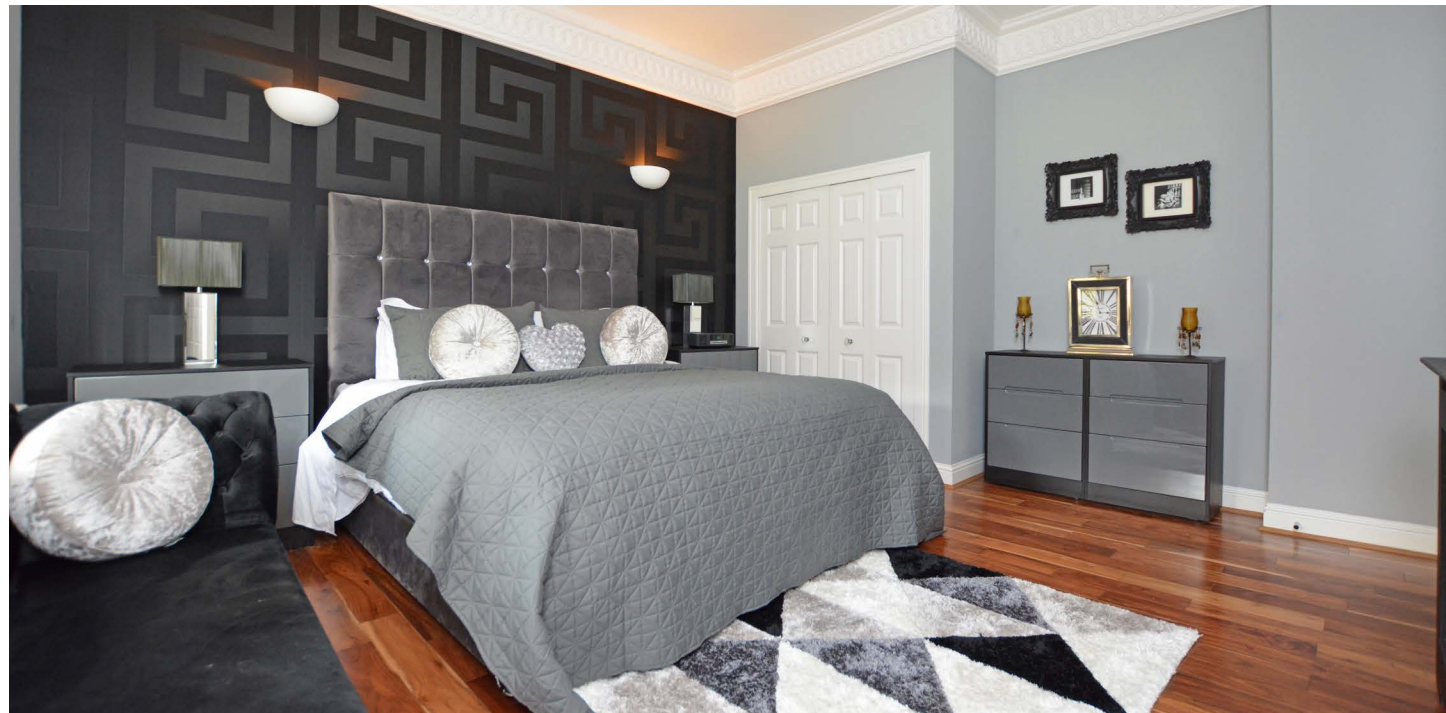
Features and benefits include a quality kitchen, luxury sanitary ware, electric central heating, double glazing (windows renewed in 2017), new carpets, neutral decoration and alarm system.

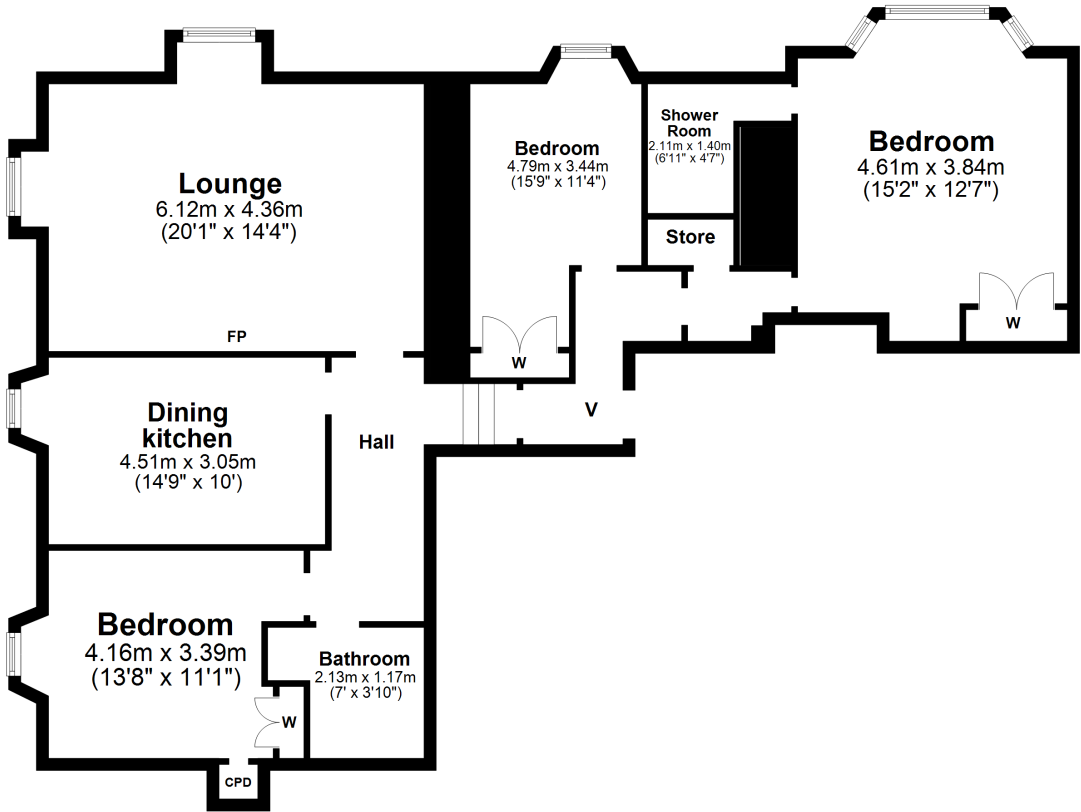
In summary the accommodation extends to an entrance vestibule, hallway, fabulous formal lounge with feature Limestone fireplace with driftwood insert and cornice work, dining kitchen with integrated appliances and three generous double bedrooms including a master suite with luxury three piece en-suite shower room. Bedrooms two and three also feature fitted wardrobes.

Completing the accommodation is a four piece bathroom. Externally there are communal garden grounds with flowing lawns and private parking.









Local Area

Craig House is set in an idyllic, peaceful location on an elevated site with far reaching views to the River Irvine, Dundonald Castle and across rolling Ayrshire countryside. The original mansion house is set in well tended gardens with flowing lawns and incorporates a variety of specimen trees such as evergreen oak, cherry, yew and chestnut affording tranquil woodland and river walks. Approached by a sweeping driveway and accessed via a pillared entrance this is a truly special location and home.

TR1421 | Sat Nav: Craighouse, Crosshouse, KA2 0EL

* All measurements and distances are approximate Floorplans are for illustration purposes and may not be to scale.



WE'RE **SOLD** ON YOUR FUTURE

Corum Troon
29 Portland Street, Troon KA10 6AA

Tel: 01292 310 010

Fax: 01292 310 019

Email: troon@corumproperty.co.uk

www.corumproperty.co.uk

