



THE PROPERTY

2 | BEDROOMS 2 | BATHROOMS
1 | PUBLIC ROOM

2/1 46 Lauderdale Gardens is a superb two bedroom flat situated within the highly regarded Lauderdale Mansions by the award-winning Adam Scotland, with lift access and exclusive use of an allocated, underground parking space.

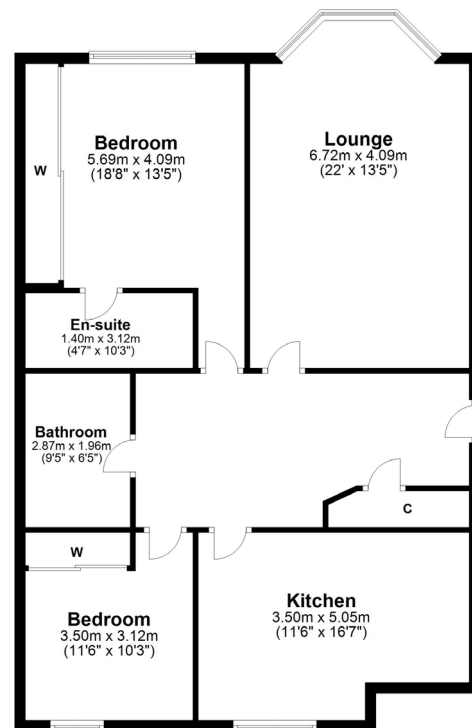
The building is initially entered via a secure video entry system leading into a welcoming residents' hallway with lift access to all levels. The internal accommodation comprises: open reception hall with large storage cupboard off, bay windowed sitting room with feature fireplace and spacious dining kitchen with ample space for entertaining. There are two well- proportioned double bedrooms, both with fitted wardrobes and the master benefiting from an en-suite shower room and finally, there is a large family bathroom completing the accommodation on offer.

The flat has gas central heating, double glazing, secure video entry system and as previously mentioned, exclusive use of an allocated parking space in the underground garage.

Amenities

Hyndland is highly regarded as the social hub of the West End. The area has been truly transformed in the last ten years with a number of excellent bars and restaurants including, Epicures by Cail Bruich, Cottiers and Caffe Parma.





WE4419 | Sat Nav: 46 Lauderdale Gardens, Hyndland, Glasgow, G12 9QT

All measurements and distances are approximate.
Floorplans are for illustration purposes and may not be to scale.

For the full home report visit www.corumproperty.co.uk



c o r u m

WE'RE **SOLD** ON YOUR FUTURE

82 Hyndland Road, G12 9UT

Tel: 0141 357 1888 - Email: westendeng@corumproperty.co.uk - Fax: 0141 357 1188