



THE PROPERTY

2 | BEDROOMS 1 | SHOWER ROOM
2 | PUBLIC ROOMS

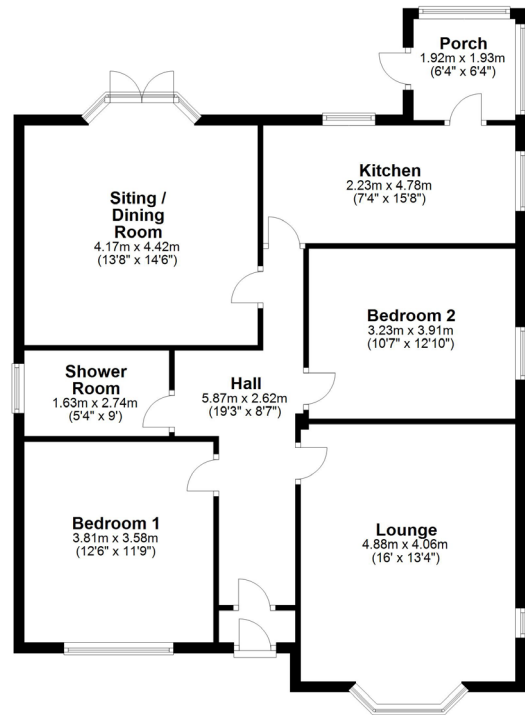
A traditional all on the level detached bungalow within enclosed private gardens.

- Enjoying a peaceful setting within the high amenity suburb of Netherlee
- Set within generous sized south facing garden grounds
- Level accommodation offering outstanding scope for further development
- Well-presented and maintained all on the level accommodation
- Walking distance to local schools, shops, and amenities

Amenities

Netherlee is one of East Renfrewshire's most sought-after residential suburbs and is a haven for young growing families enjoying access to some of the best schooling within the local area. There is a full range of independent retailers including cafes and restaurants, and the district provides swift access via both road and rail to the city centre and beyond. There is a variety of places of worship found within the surrounding area and an array of sports and leisure activities including local parks, health clubs, gyms and golf courses close to hand in addition to equestrian pursuits.





CC0531 | Sat Nav: 5 Gordon Road, Netherlee, G44 3TL

All measurements and distances are approximate.
Floorplans are for illustration purposes and may not be to scale.

For the full home report visit www.corumproperty.co.uk



WE'RE **SOLD** ON YOUR FUTURE

5 Helena Place, Clarkston, G76 7RB

Tel: 0141 648 6000 - Email: clarkston@corumproperty.co.uk