



**24 CASTLE SQUARE**

DOONFOOT



c o r u m

[www.corumproperty.co.uk](http://www.corumproperty.co.uk)





## 24 CASTLE SQUARE, DOONFOOT

3 | BEDROOMS   1 | BATHROOM   2 | PUBLIC ROOMS

**A most impressive modern semi-detached villa ideally suited to the family market with well presented accommodation all located adjacent to Greenan shore and Doonfoot primary school.**

Number 24 is a modern semi-detached villa by MacTaggart & Mickel which is presented in good decorative order and represents an excellent opportunity to a variety of potential purchasers to acquire a lovely home within walking distance of Greenan Shorefront and Doonfoot primary school.

The property has been reconfigured by the current owner resulting in a stylish layout with a semi open plan kitchen/dining room.

Benefits of the property include a modern fitted kitchen, three piece shower room, stripped wooden floors, neutral decoration, gas central heating with a 'Baxi' boiler and double glazing. In addition there is a wooden cabin in the rear garden which would make an excellent home office/work shop/playroom etc.

In summary the accommodation extends to, on the ground floor, a reception hallway with two piece wc off, lounge with door to the rear garden, dining room and fitted kitchen. Upstairs there are three bedrooms and a three piece shower room.

Externally the front garden is laid to lawn with a driveway to the side providing space for 2/3 vehicles. The south easterly facing rear garden is laid to low maintenance with a large deck, lawn, chipped border, garden shed and cabin with power.





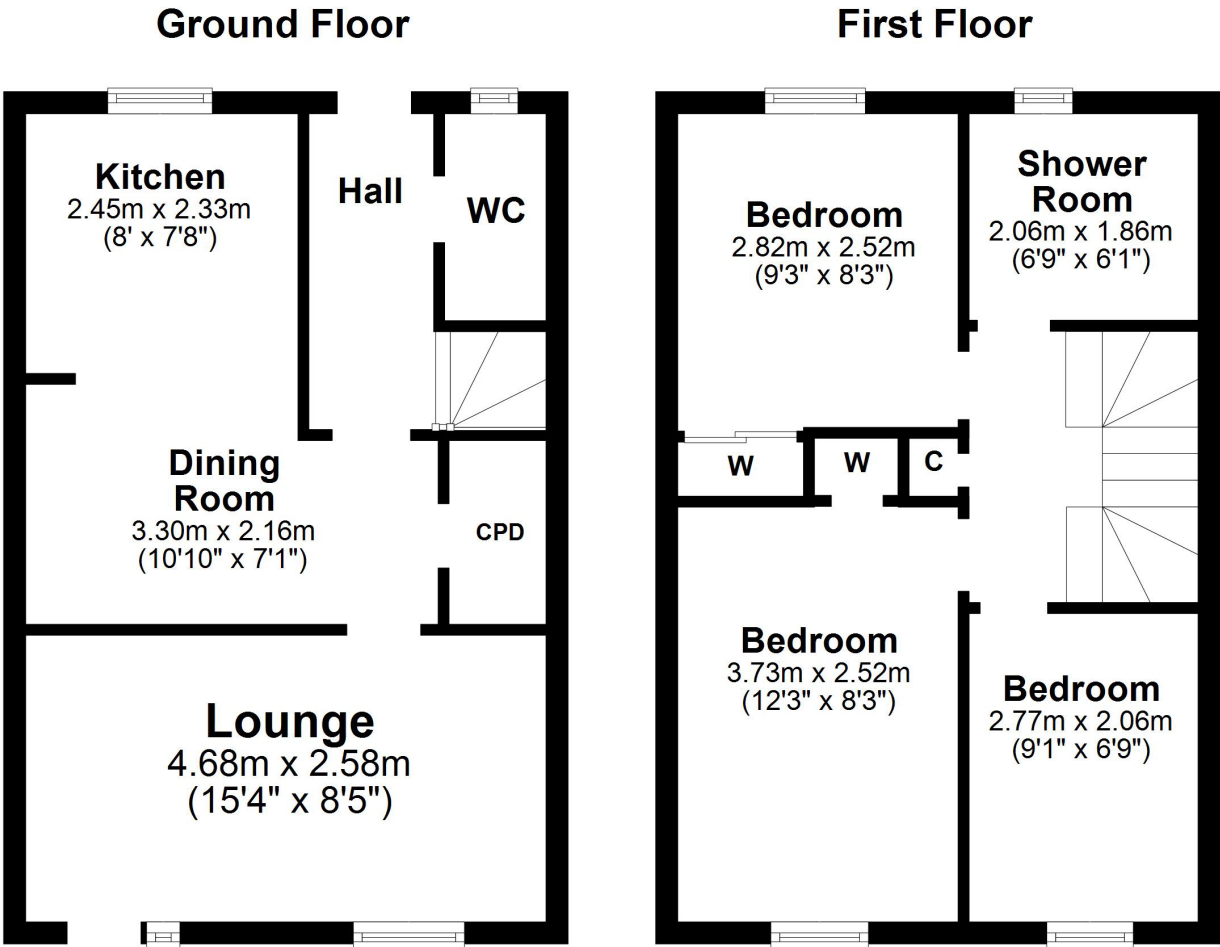












Local Area

Castle Square is a quiet residential cul-de-sac adjacent to Greenan shorefront and within close proximity to Doonfoot Primary School. The immediate area provides a number of amenities while the centre of Ayr lies around 3 miles distant and provides a more comprehensive range of amenities and main line rail and road links to Glasgow.

AY3889 | Sat Nav: 24 Castle Square, Doonfoot, KA7 4JN

\* All measurements and distances are approximate Floorplans are for illustration purposes and may not be to scale.





WE'RE **SOLD** ON YOUR FUTURE

Corum Ayr  
14 Beresford Terrace, Ayr KA7 2EG

**Tel:** 01292 880 888

**Fax:** 01292 613 588

**Email:** [ayr@corumproperty.co.uk](mailto:ayr@corumproperty.co.uk)

[www.corumproperty.co.uk](http://www.corumproperty.co.uk)

  
c o r u m