



1 WESTON PLACE

PRESTWICK



C O R U M

www.corumproperty.co.uk



1 WESTON PLACE, PRESTWICK

4 | BEDROOMS 2 | BATHROOMS 1 | PUBLIC ROOM

A truly stunning and extended executive detached villa, set on a preferred corner plot with an impressive amount of accommodation in a quiet residential area of Prestwick.

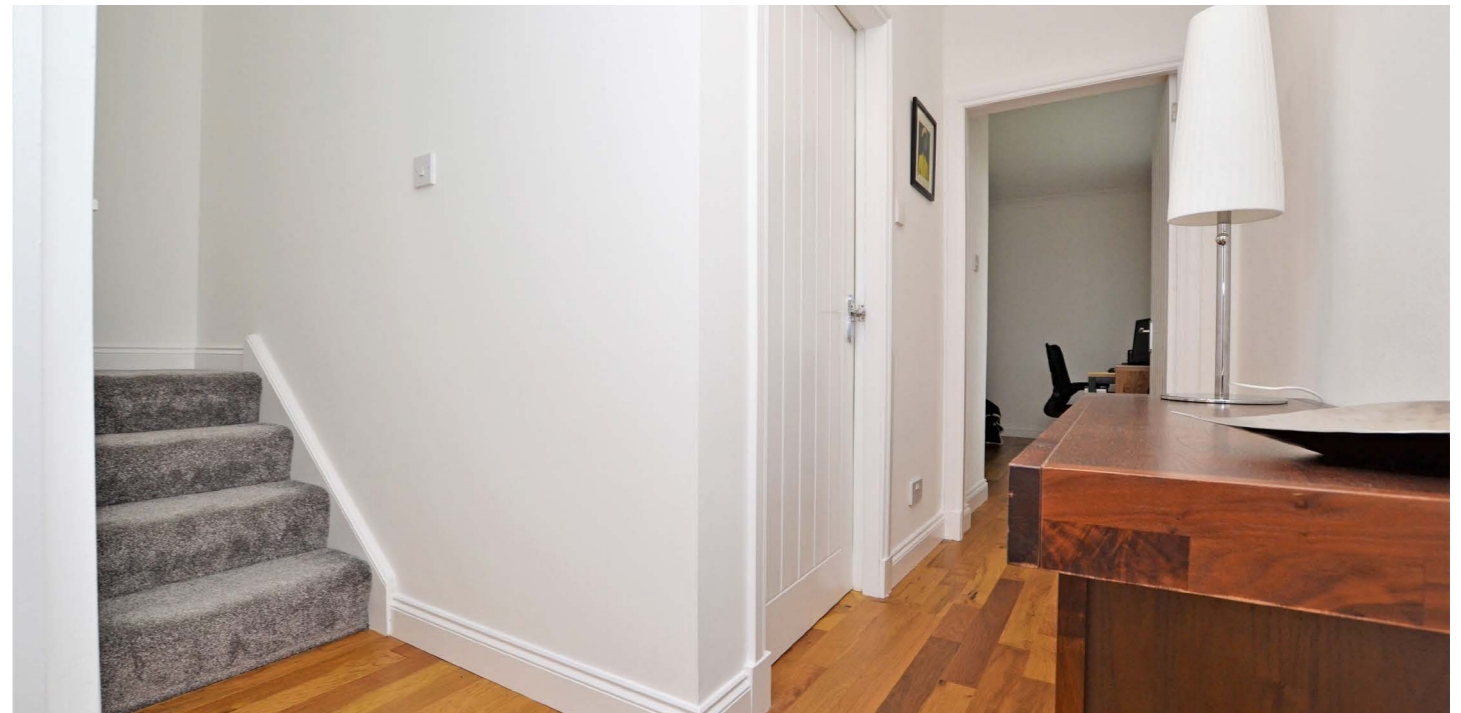
1 Weston Place is a beautifully presented detached family villa that occupies a large corner plot and has been extended and recently renovated to create a superior home with first class accommodation across two floors. There are quality floor coverings, luxury fixtures and fittings, ample storage and the interior is complimented by landscaped gardens that wrap around the property, with a detached garage and driveway. Weston Place is a quiet cul-de-sac located within the popular seaside town of Prestwick, close to excellent schools, the amenities of the town and the A77 road network.

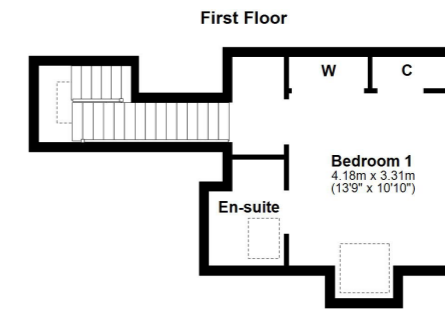
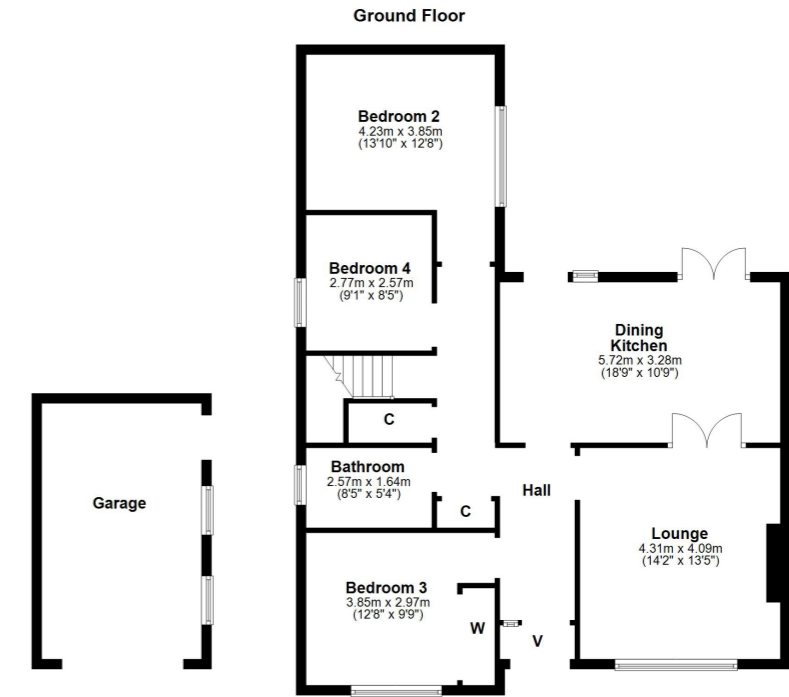
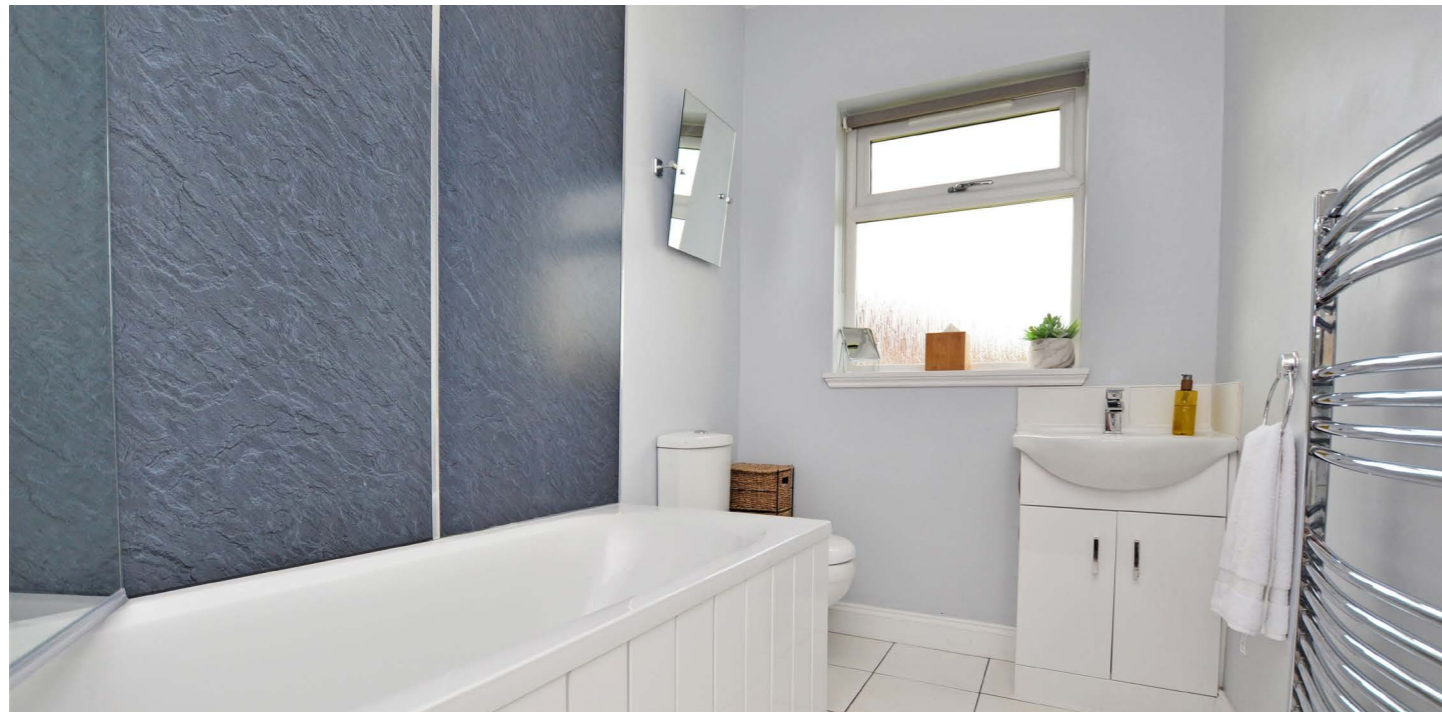
In more detail, the internal accommodation extends to an entrance vestibule, a bright hallway, a spacious lounge with glass doors through to a luxury fitted dining kitchen, with a central island and French doors out to the rear garden, a double bedroom to the front, a downstairs bathroom and an inner hallway with two double bedrooms and stairs to the upper floor. The upper level has a large master bedroom with fitted wardrobe space and an en suite shower room.

Externally there are gardens laid predominantly with lawn that extend from the front round to the side of the property, with decorative shrub borders. There is a driveway leading to a detached garage at the rear and the fully enclosed rear garden has a mixture of lawn, decking, paved pathways and decorative pebbles.









Local Area

Weston Place is located in a sought after residential locale close to local amenities including schooling, shops and St Cuthberts Golf Club. Prestwick town centre is around one mile distant and provides a plethora of boutique shops, restaurants and bars. There are excellent transport links with mainline rail and road links to Glasgow and surrounding districts.

AY3896 | Sat Nav: 1 Weston Place, Prestwick, KA9 2ED

* All measurements and distances are approximate Floorplans are for illustration purposes and may not be to scale.



WE'RE **SOLD** ON YOUR FUTURE

Corum Ayr
14 Beresford Terrace, Ayr KA7 2EG

Tel: 01292 880 888

Fax: 01292 613 588

Email: ayr@corumproperty.co.uk

www.corumproperty.co.uk

