



2 EGLINTON TERRACE

AYR



www.corumproperty.co.uk



2 EGLINTON TERRACE, AYR

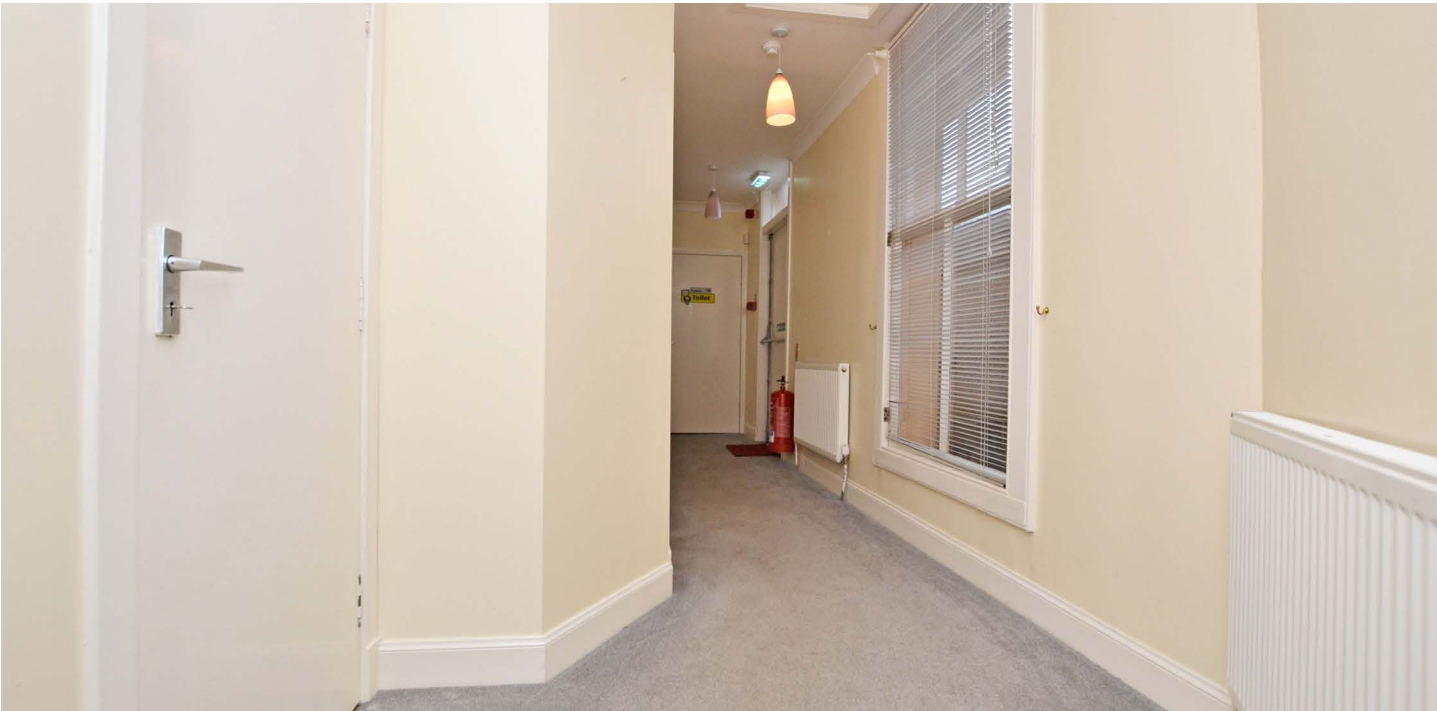
4 | BEDROOMS 4 | BATHROOMS 2 | PUBLIC ROOMS

A substantial terraced home with gorgeous traditional features, spacious accommodation and set close to both the seafront and the amenities of the market town of Ayr.

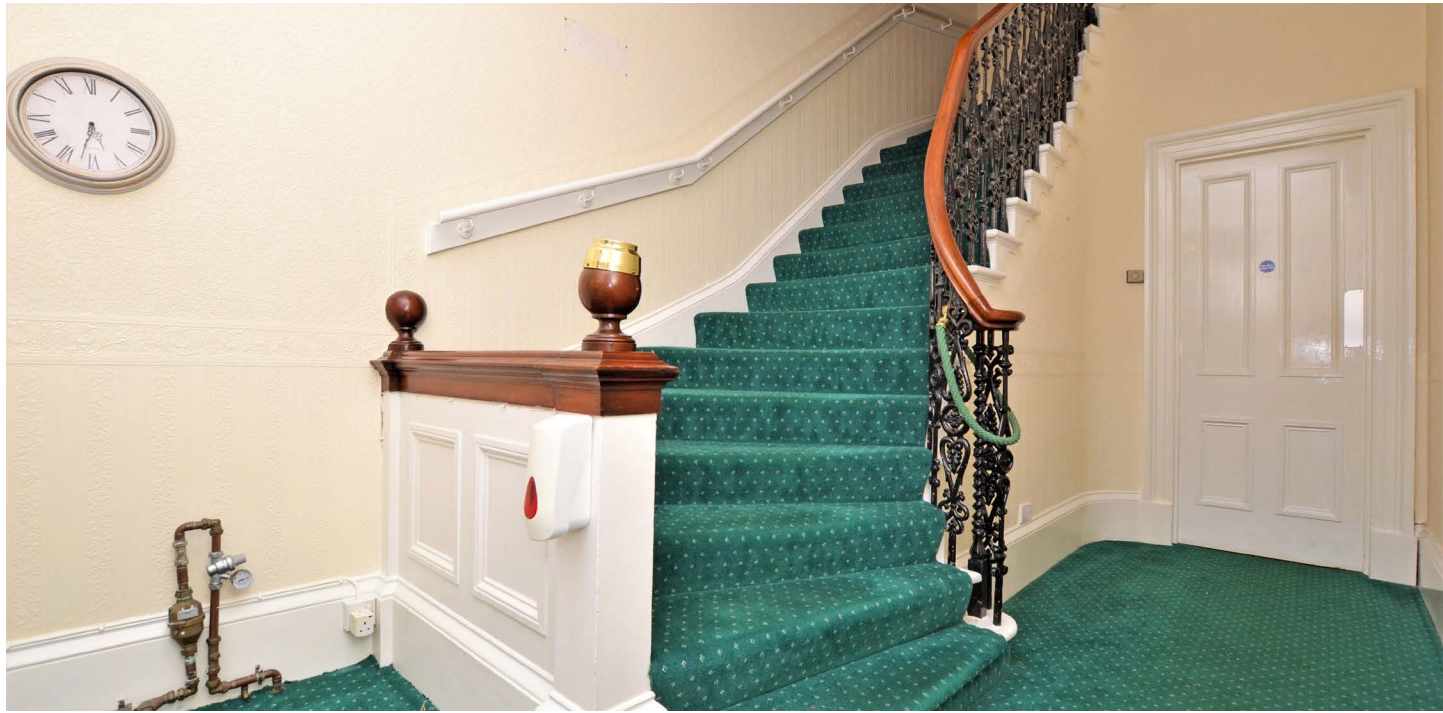
Eglinton Terrace is formed of large traditional terraced homes and conversions and set within the original grounds of the historic Cromwellian citadel and fort at the heart of Ayr. The seafront is within walking distance and the properties have an open outlook across the fort, open green space and tennis courts. Number 2 is a substantial family home with a wealth of spacious accommodation that will appeal to a range of potential purchasers. Numerous stunning original features have been preserved, while there are modern fixtures and fittings throughout. There is a detached garage accessed from the rear and a private garden with a summerhouse. This impressive building was formerly the home of a local charity and is being offered to the market as a residential property, subject to approval by the local authority, and any modifications required are reflected in the asking price.

In more detail, the internal accommodation extends to an entrance vestibule leading to a welcoming reception hallway, an inner hallway leads into a spacious lounge to the front, a study, a dining room/reception room, a fitted kitchen with a door leading out to the garden, an additional reception room that then leads into an extension with a disabled wet room, a shower room, a fire exit out to the garden, a utility room, a W.C and a store. On the upper floor there is an impressive master bedroom to the front with detailed cornicing and a ceiling rose, three additional bedrooms, a shower room and staircase leading up to a second floor loft room.

Externally there are gardens and on street parking to the front. There is a detached garage accessed at the rear, a summerhouse and a fully enclosed rear garden laid with paved pathways and a lawn.









Local Area

Eglinton Terrace is a locally admired Victorian terrace in one of Ayr’s oldest areas overlooking Ayr Fort tennis courts and St Johns Tower. Ayr itself has a comprehensive range of retail shopping, transport links, bars, restaurants and recreational facilities. The A77/M77 road network provides swift commuting access to Glasgow City Centre and surrounding districts.

AY3897 | Sat Nav: 2 Eglinton Terrace, Ayr, KA7 1JJ

* All measurements and distances are approximate Floorplans are for illustration purposes and may not be to scale.



WE'RE **SOLD** ON YOUR FUTURE

Corum Ayr
14 Beresford Terrace, Ayr KA7 2EG

Tel: 01292 880 888

Fax: 01292 613 588

Email: ayr@corumproperty.co.uk

www.corumproperty.co.uk

