



2J VICTORIA PARK

AYR



c o r u m

www.corumproperty.co.uk



2J VICTORIA PARK, AYR

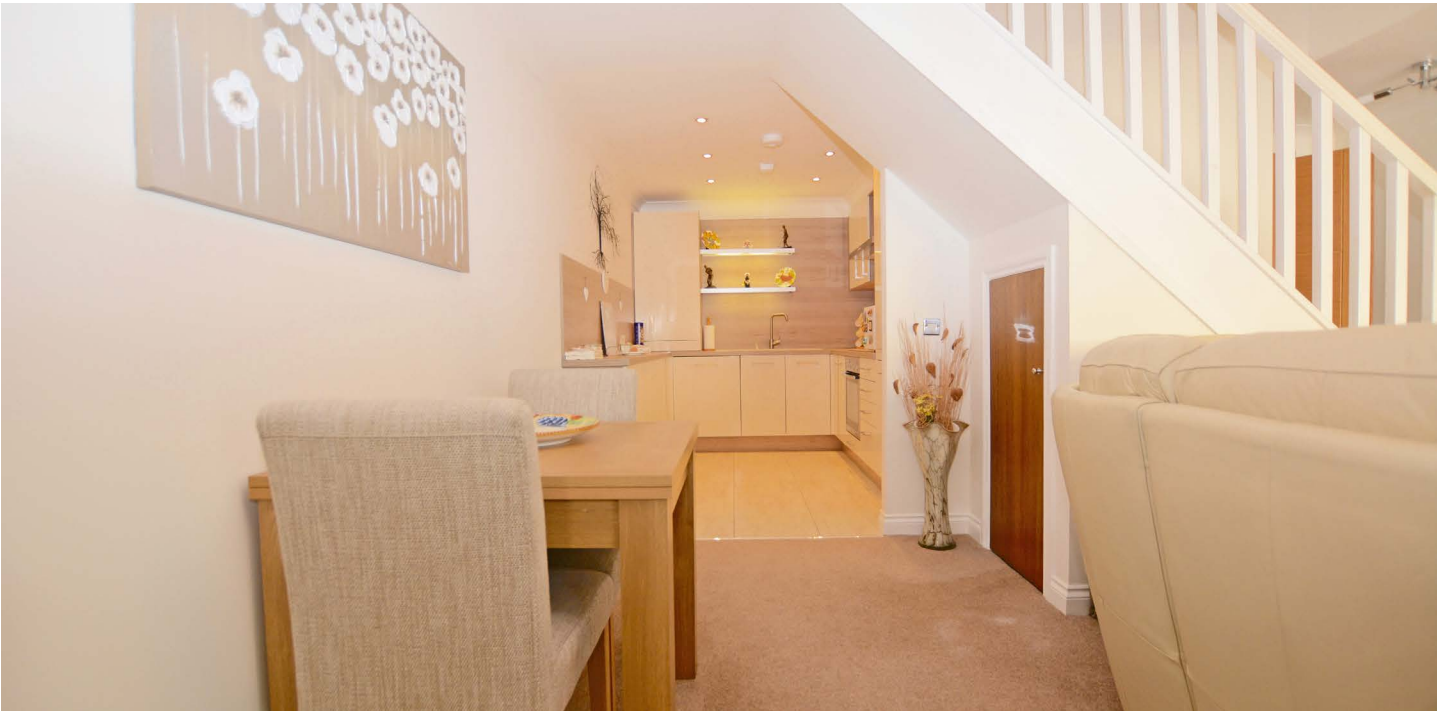
2 | BEDROOMS 2 | BATHROOMS 1 | PUBLIC ROOM

An immaculate mid terraced townhouse, luxuriously finished throughout and providing well proportioned accommodation with communal manicured gardens and private parking.

Number 2J is a modern mid terrace townhouse which enjoys a wonderful position within close proximity to the seafront and Old Racecourse. The property forms part of a courtyard development converted around 2015 from the Old Racecourse Hotel within one of Ayr's most sought after residential areas.

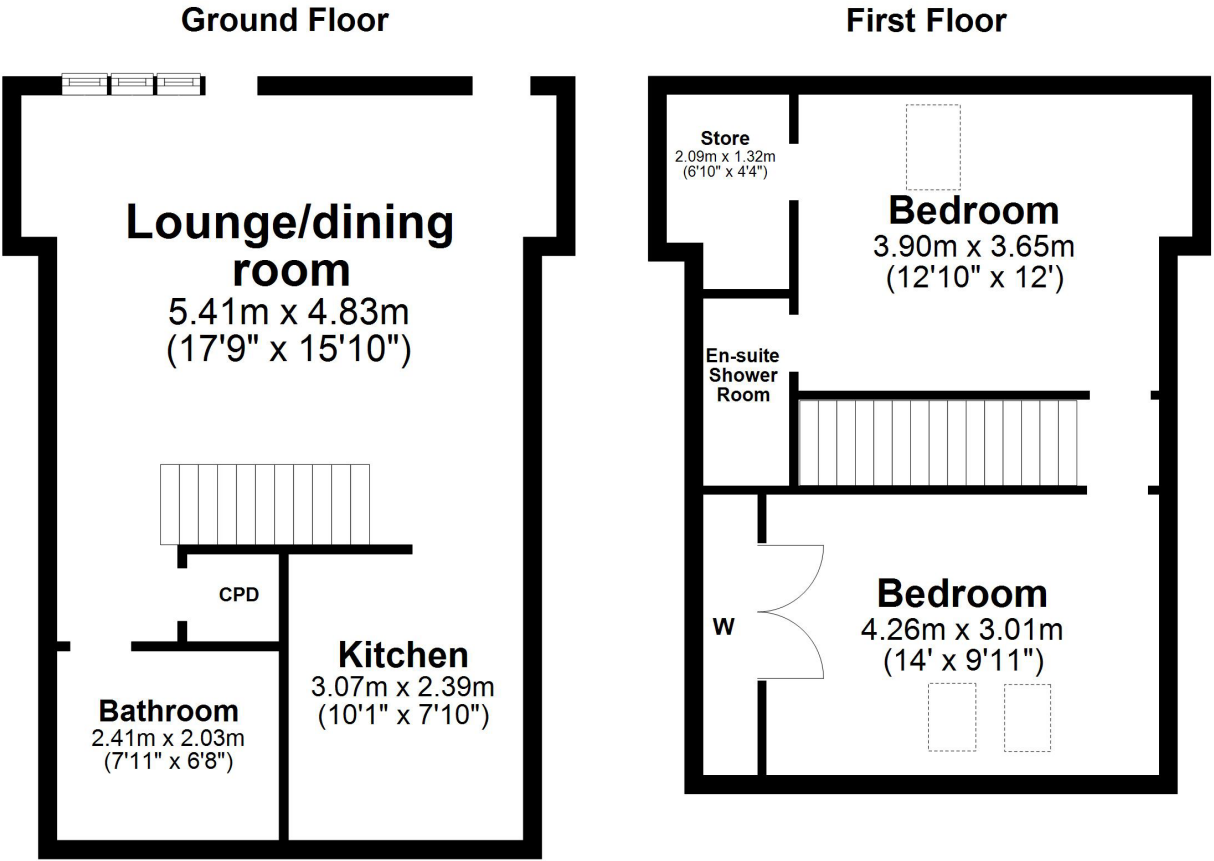
The property provides a stylish open plan layout and is presented in true walk-in condition with features and benefits including a quality fitted kitchen with integrated appliances, luxury sanitary ware, gas central heating with a 'Viessmann' boiler, quality floor coverings, double glazing, alarm system and extensive storage space.

Externally there are tended communal gardens with areas laid to lawn with shrubbery borders, bin store and both residents and visitor parking. The enclosed courtyard has been hard landscaped and provides a lovely private setting to relax. Adjacent to the property is a private parking space.











WE'RE **SOLD** ON YOUR FUTURE

Corum Ayr

14 Beresford Terrace, Ayr KA7 2EG

Tel: 01292 880 888 **Fax:** 01292 880 888 **Email:** ayr@corumproperty.co.uk

www.corumproperty.co.uk