



APT 3 CRAIG HOUSE

CROSSHOUSE



c o r u m

www.corumproperty.co.uk



APT 3 CRAIG HOUSE, CROSSHOUSE

2 | BEDROOMS 2 | BATHROOMS 1 | PUBLIC ROOM

A gorgeous and superior first floor apartment in a B-listed neoclassical mansion house, with stunning elevated views south across garden grounds and open countryside, and bright, spacious and thoroughly modern accommodation.

Craig House is set in an idyllic, peaceful location on an elevated site, with far-reaching views to the River Irvine, Dundonald Castle and across rolling Ayrshire countryside. The original mansion house, formerly the home of Colonel Pollock Morris, is set in well-tended gardens with flowing lawns and incorporates a variety of specimen trees, such as evergreen Oak, Cherry, Yew and Chestnut, affording tranquil woodland and river walks. Approached by a sweeping driveway and accessed by a pillared entrance, this is a truly special building and location.

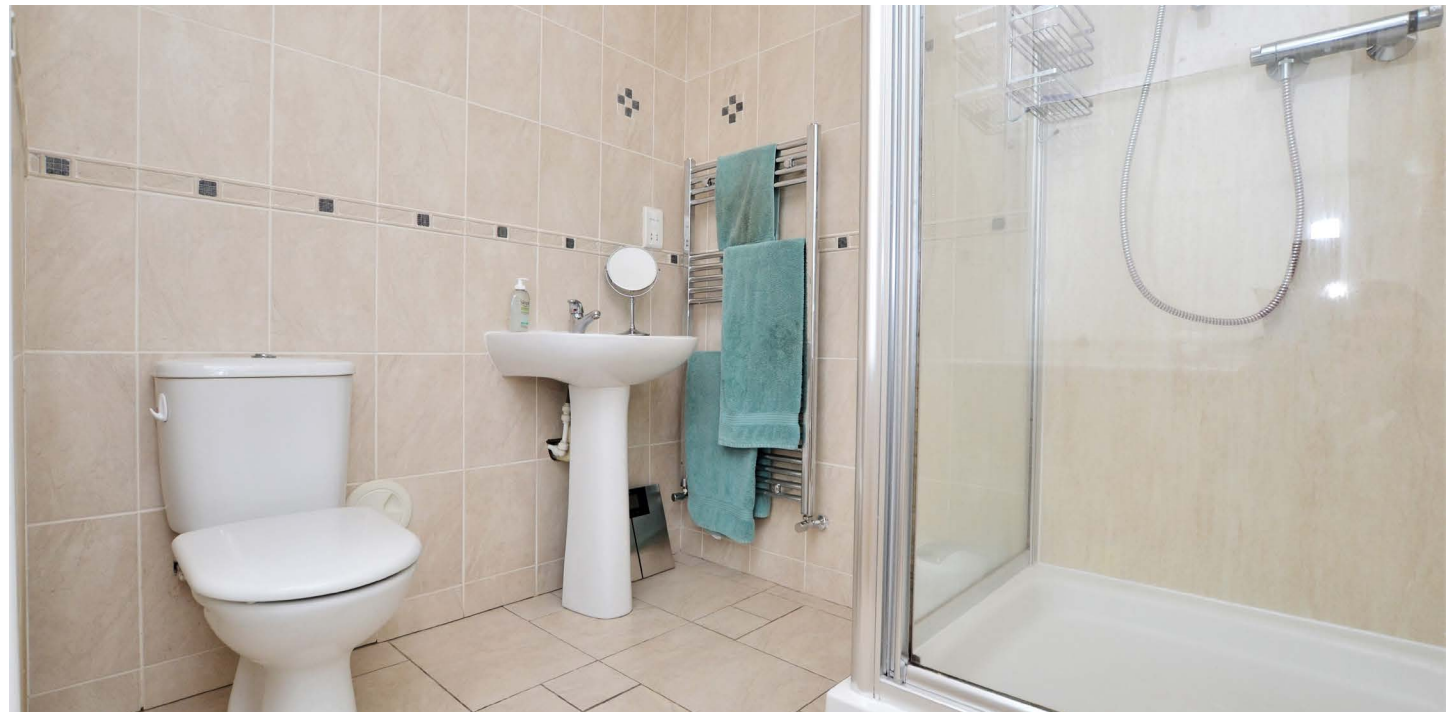
Apartment 3 enjoys a preferred location within Craig House, situated on the first floor with its own private entrance and sweeping staircase and hallway. There are spectacular elevated views from the lounge, kitchen and main bedroom windows and the apartment is presented in truly walk-in condition, having been well maintained, and provides all the conveniences one would expect from a modern property. These are combined with a range of period features to create an elegant and spacious home that will suit a range of potential buyers.

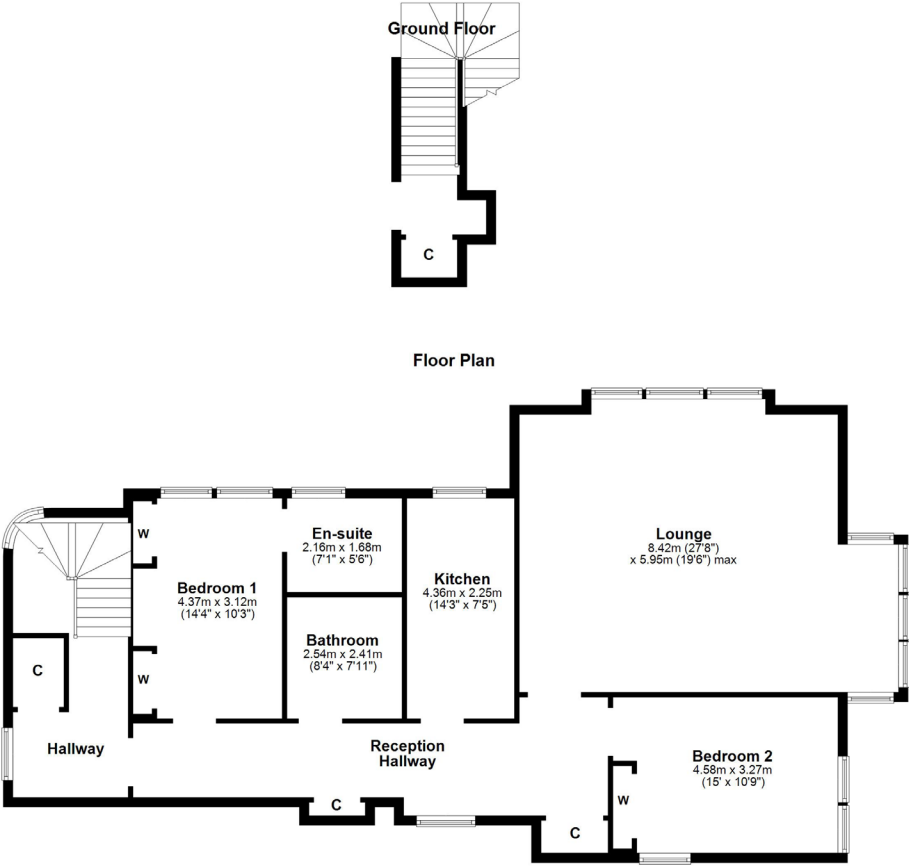
In more detail, the internal accommodation extends to an entrance hall with a storage cupboard and a stairway leading to an upper landing with a storage cupboard and a door into the main apartment, a dual bay-windowed lounge with ample space for dining and panoramic views across open countryside and across to Dundonald Castle, a modern fitted kitchen with integrated appliances, a fully tiled four piece bathroom suite with a separate shower cubicle, a reception hallway with storage cupboards and two large double bedrooms with fitted wardrobes, including one with a fully tiled en suite shower room.

Externally there are substantial communal garden grounds, laid mainly to lawn, with mature trees, paved pathways and decorative shrub areas. There is also ample residents and visitors parking to the front of the building.









Local Area

Craig House is a short drive from Kilmarnock, which is the predominant market town within East Ayrshire and benefits from a comprehensive range of local amenities, including excellent primary and secondary schooling, restaurants and bars, road and rail links to Glasgow and beyond, retail shopping, supermarkets and a host of varied leisure facilities. There are several music venues, exhibition halls, such as the Dick Institute, and a number of spacious public green spaces, including the Kay Park, Howard Park and the park surrounding the historic Dean Castle. Craig House is ideally positioned to take advantage of all of the neighbouring amenities and also for swift commuting to surrounding districts via the recently upgraded A77/M77 road network, which also links to both Prestwick International Airport and Glasgow Airport. There are first class golf courses throughout Ayrshire, including the famous Royal Troon and Trump Turnberry, regular hosts of the Open Championship.

TR1430 | Sat Nav: Craig House, Crosshouse, KA2 0EL

* All measurements and distances are approximate Floorplans are for illustration purposes and may not be to scale.



WE'RE **SOLD** ON YOUR FUTURE

Corum Troon
29 Portland Street, Troon KA10 6AA

Tel: 01292 310 010

Fax: 01292 310 019

Email: troon@corumproperty.co.uk

www.corumproperty.co.uk

