



THE PROPERTY

4 | BEDROOMS 3 | BATHROOMS
1 | PUBLIC ROOM

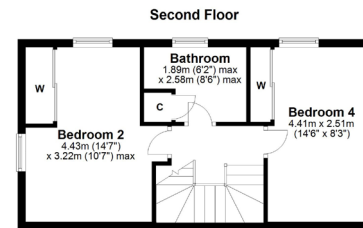
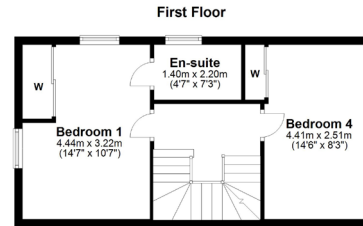
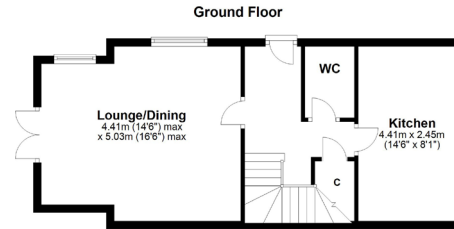
A stunning four bedroom home, stylishly upgraded to offer contemporary accommodation within the popular 'Weirs Wynd' Development, Brookfield.

- Modern semi detached townhouse by 'David Wilson Homes'
- Four double bedrooms all with fitted wardrobe storage
- Reconfigured and upgraded fitted kitchen
- Large lounge/dining room with double doors to the rear garden
- Family bathroom, en-suite shower room and WC
- Landscaped and enclosed rear garden
- Single garage
- Gas central heating, alarm system and double glazing throughout

Amenities

Brookfield is a much sought after location as it is tranquil and rural yet within easy commuting distance of Glasgow and beyond. Brookfield offers the benefit of village lifestyle and remains convenient for the A737 Bypass allowing travel to North Ayrshire as well as access to the M8 motorway towards Glasgow Airport, INTU Retail Park and beyond.





BW1978 | Sat Nav: 23 Glendale Wynd, Brookfield PA5 8WR

All measurements and distances are approximate.
Floorplans are for illustration purposes and may not be to scale.

For the full home report visit www.corumproperty.co.uk



corum

WE'RE **SOLD** ON YOUR FUTURE

2 Windsor Place, Main Street, Bridge of Weir PA11 3AF

Tel: 01505 691 400 - Email: bridgeofweir@corumproperty.co.uk