



THE PROPERTY

2 | BEDROOMS 1 | BATHROOM
1 | PUBLIC ROOM

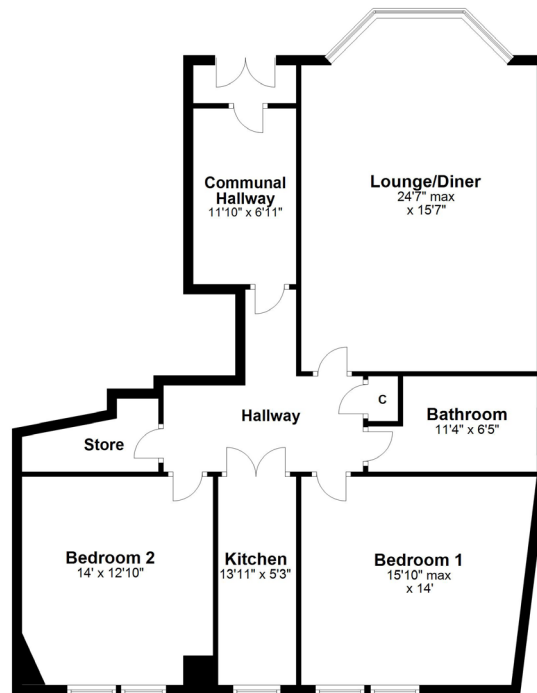
A unique ground floor conversion of a double fronted sandstone townhouse in the thriving Strathbungo district.

- Large lounge/diner with bay window
- Fitted kitchen
- 2 Generous double sized bedrooms
- Large fully tiled bathroom
- Gas central heating, neutral decor
- Private parking and great storage
- Broad communal hallway

Amenities

50C Marywood Square is within walking distance of a diverse range of amenities including independent coffee shops, restaurants, bars and delicatessens. Strathbungo is nearby Queens Park delivering nature trails, football pitches and tennis courts. Pollokshields West and Queens Park train stations are within half a mile of the front door.





SS3988 | Sat Nav: 50C Marywood Square, Strathbungo, G41 2BJ

All measurements and distances are approximate.
Floorplans are for illustration purposes and may not be to scale.

For the full home report visit www.corumproperty.co.uk



corum

WE'RE **SOLD** ON YOUR FUTURE

247 Kilmarnock Road Shawlands G41 3JF

Tel: 0141 636 7588 - Email: shawlands@corumproperty.co.uk - Fax: 0141 636 7589