



0/2, 39 MELVILLE STREET
POLLOKSHIELDS

THE PROPERTY

3 | BEDROOMS 1 | BATHROOM
1 | PUBLIC ROOM

A substantial refurbished three-bedroom ground floor flat, set close to cafes, shops, and transport links.

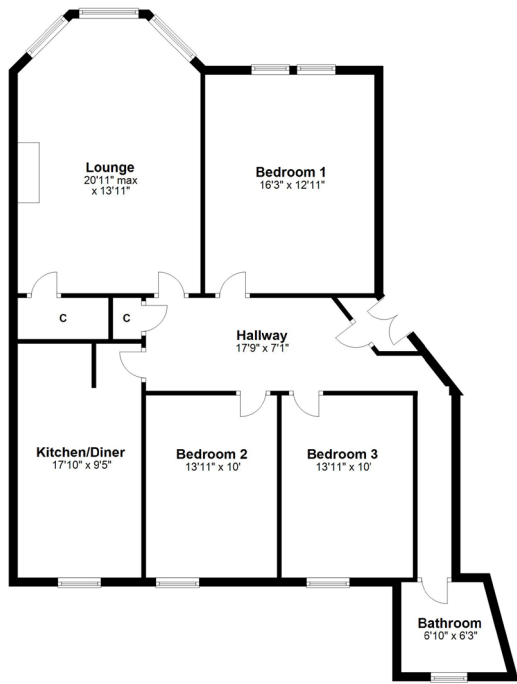
- Vestibule, large hallway, main bay window lounge
- Three flexible double bedrooms
- Beautifully appointed dining sized kitchen
- Excellent refurbished bathroom, gas central heating, secure door entry
- A large flat in excellent condition
- Private gardens to front, communal to rear

Amenities

The property is positioned within walking distance of shops and amenities upon Albert Drive, Kenmure Street and Nithsdale Road/Kildrostan Street where thriving coffee shops, restaurants and delicatessens can be found. More extensive amenities are available at the Marks and Spencer's store at Queens Park, the Sainsburys Local on Darnley Road, the Morrisons store at Crossmyloof or Newlands and the shopping mall at Silverburn is a short drive to the West.

Recreational pursuits are varied namely at Clydesdale Cricket Club, Titwood Bowling and Tennis Club, Maxwell Park, Pollok Country Park where Pollok House and the world famous Burrell collection can be found, also Bellahouston Park & its Ski and Sports Centre.





SS3989 | Sat Nav: 0/2, 39 Melville Street, Pollokshields, G41 3DN

All measurements and distances are approximate.
Floorplans are for illustration purposes and may not be to scale.

For the full home report visit www.corumproperty.co.uk




c o r u m

WE'RE **SOLD** ON YOUR FUTURE

247 Kilmarnock Road Shawlands G41 3JF

Tel: 0141 636 7588 - Email: shawlands@corumproperty.co.uk - Fax: 0141 636 7589