



3 CORSE TERRACE

WEST KILBRIDE



c o r u m

www.corumproperty.co.uk



3 CORSE TERRACE, WEST KILBRIDE

3 | BEDROOMS 1 | BATHROOM 2 | PUBLIC ROOMS

Located in the heart of the ever popular coastal village of West Kilbride and presented in true walk in condition, 3 Corse Terrace is a charming red sandstone end terraced villa that will hold broad appeal.

The meticulously maintained home retains great character with generously proportioned main apartments, high quality fixtures and fittings and neutral decoration. In more detail the accommodation on offer comprises entrance vestibule opening to a reception hallway. The lounge is front facing with a walk in bay window and a woodburning stove at its focal point. To the rear of the reception hall there is a bright, spacious living/dining room with cast iron gas stove and doorway access to a plumbed utility room and a modern kitchen. The kitchen is fitted with a range of wall and base units with integrated appliances to include gas hob, oven and extractor.

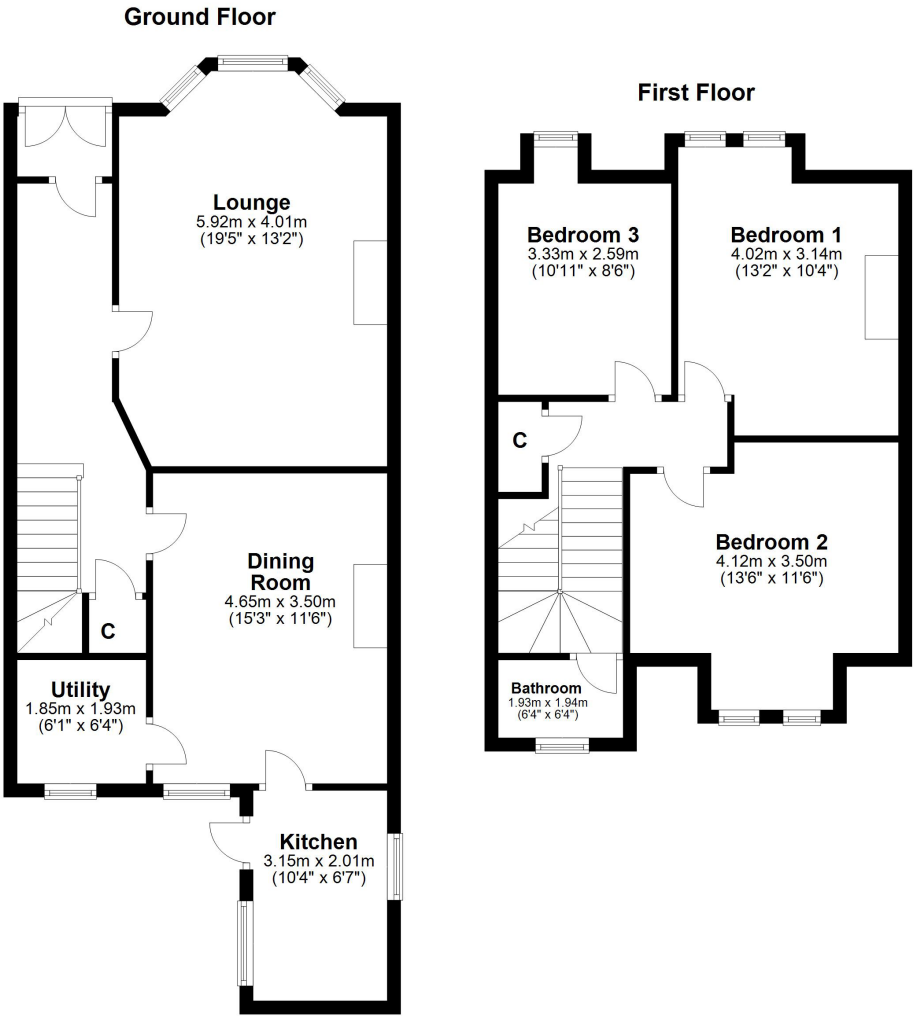
The freestanding fridge and dishwasher can be included in the sale. The property has three bedrooms, each with the original tiled, cast iron fireplace, located on the upper floor and a modern bathroom positioned on the half landing with a three piece suite to include WC, wash handbasin and bath with electric over bath shower. In addition to the above the property has double glazing, gas central heating, original sanded wooden flooring in the reception hall, lounge and bedrooms and gardens to the front and rear.

The rear gardens are enclosed with a westerly aspect and feature two paved terraces, lawn, garden shed and beds planted with seasonal shrubs and trees.









Local Area

West Kilbride, which incorporates Seamill, is a small village which lies South of Largs and looks across the Firth of Clyde over to the Isle of Arran. The village has many amenities which include a primary school, championship links golf course, bowling club and shopping amenities. The village is also well positioned for accessing all major road networks and there is a local train station which provides a frequent service to Largs and Glasgow.

LA1533 | Sat Nav: 3 Corse Terrace, West Kilbride, KA23 9ER

* All measurements and distances are approximate Floorplans are for illustration purposes and may not be to scale.



WE'RE **SOLD** ON YOUR FUTURE

Corum Largs
66 Main Street, Largs KA30 8AL

Tel: 01475 675 001 **Fax:** 01475 674 893 **Email:** largs@corumproperty.co.uk

www.corumproperty.co.uk