



THE PROPERTY

4 | BEDROOMS 2 | BATHROOMS
2 | PUBLIC ROOMS

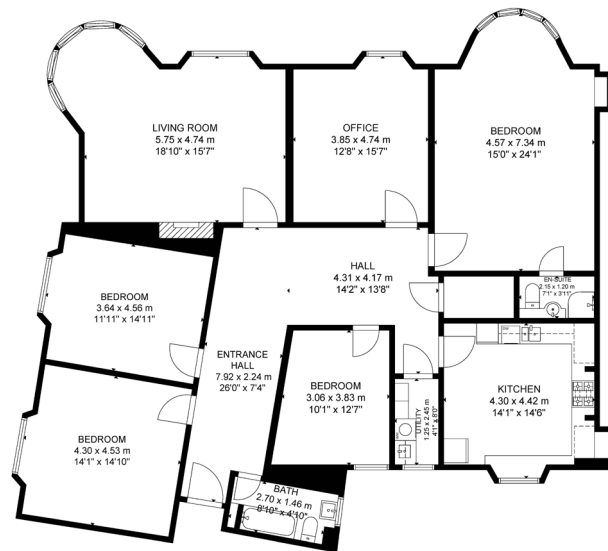
Occupying a prominent corner position in West Pollokshields, this substantial six apartment townflat delivers well-proportioned accommodation and lots of natural light. Originally dating from the late 1800s, the property is part of Olrig Terrace, a B-Listed building close to thriving amenities and regular public transport options.

- Top floor corner position
- Six versatile apartments
- Impressive dogleg hallway
- Master bedroom with en-suite
- Dining kitchen & separate utility
- Popular amenities nearby

Amenities

691 Shields Road is a stone's throw away from shops in Pollokshields and Strathbungo where coffee houses, restaurants, bars and boutiques can be found. Recreational pursuits within the area are available locally at Maxwell Park, Pollok Country Park and Titwood Lawn Tennis Club. Pollokshields West train station is approximately 300 yards walk, Shields Road underground station is less than one mile away and the M77 connects the Southside of Glasgow to Scotland's motorway network.





GROSS INTERNAL AREA
TOTAL: 198 m²/2,128 sq ft
FLOOR 1: 198 m²/2,128 sq ft
SIZE AND DIMENSIONS ARE APPROXIMATE. ACTUAL MAY VARY

SS3970 | Sat Nav: 2/2 691 Shields Road, Pollokshields, Glasgow, G41 4QL

All measurements and distances are approximate.
Floorplans are for illustration purposes and may not be to scale.

For the full home report visit www.corumproperty.co.uk



WE'RE **SOLD** ON YOUR FUTURE

247 Kilmarnock Road Shawlands G41 3JF

Tel: 0141 636 7588 - Email: shawlands@corumproperty.co.uk - Fax: 0141 636 7589