



THE PROPERTY

3 | BEDROOMS 2 | BATHROOMS
2 | PUBLIC ROOMS

A mid terrace townhouse with flexible accommodation set over three levels with driveway and garage.

- Mid terrace townhouse
- Large lounge diner with balcony
- Modern fitted kitchen
- 3 bedrooms (one en-suite)
- Garden room and utility
- Driveway and parking

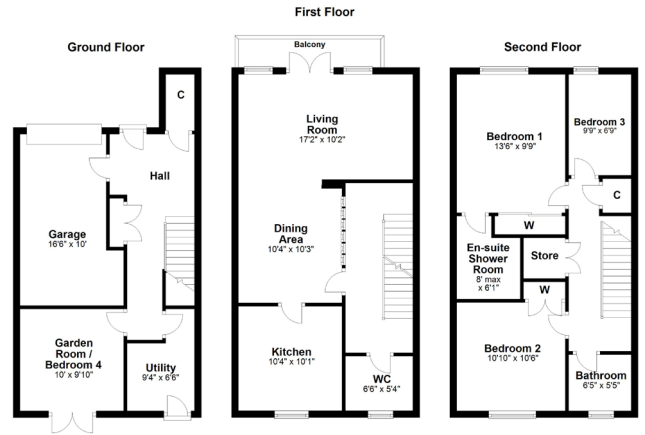
Amenities

The property is positioned within walking distance of shops and amenities upon Clarkston Road, Fenwick Road and Kilmarnock Road where thriving coffee shops, restaurants and delicatessens can be found. More extensive amenities are available at the Sainsburys store at Muirend, the Morrisons store at Giffnock and the shopping mall at Silverburn is a short drive to the West.

Recreational pursuits are varied including well maintained municipal parks, health clubs/gyms, golf courses both public and private.

Schooling is available locally at primary and secondary levels. There are also a number of pick-up points within G43 for Glasgow's leading independent schools.





SS3979 | Sat Nav: 52 Burnhead Road, Newlands, G43 2SU

All measurements and distances are approximate.
 Floorplans are for illustration purposes and may not be to scale.

For the full home report visit www.corumproperty.co.uk



■ ■ ■
c o r u m

WE'RE **SOLD** ON YOUR FUTURE

247 Kilmarnock Road Shawlands G41 3JF

Tel: 0141 636 7588 - Email: shawlands@corumproperty.co.uk - Fax: 0141 636 7589