



  
C O R U M

0 / 2 43 QUEENSBOROUGH GARDENS

HYNDLAND



# THE PROPERTY

2 | BEDROOMS    1 | BATHROOM  
1 | PUBLIC ROOM

Situated in one of Hyndland's most desirable addresses, the position of the flat at 43 Queensborough Gardens is sure to be popular because of its open aspects over Hyndland Bowling Club and its exclusive use of the wrap around garden to the front and west facing side of the flat.

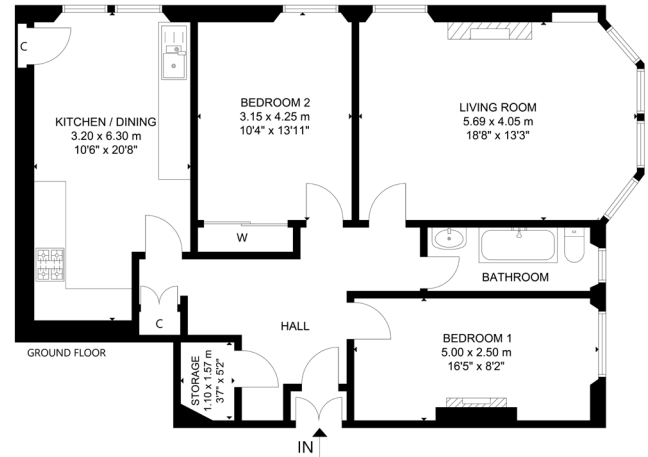
The building is entered via a secure entry system leading to a very well-maintained communal hall and access to the common rear gardens. The flat has storm doors and a beautiful original door leading into a spacious reception hall with storage off and a wonderful bay windowed lounge with dual aspect side window onto the garden and the bay facing onto the bowling green. There is an excellent sized dining kitchen, two well-proportioned double bedrooms and a stylish family bathroom. The flat boasts some fabulous original touches and features including the fireplaces and some beautiful plaster work in the lounge.

In addition, the property benefits from gas central heating and residents' permits can be requested via Glasgow City Council for on street parking.

## Amenities

Hyndland is highly regarded as the social hub of the West End. The area has been truly transformed in the last ten years with a number of excellent bars and restaurants including, Epicures by Cail Bruich, Cottiers and Caffe Parma.





WE4437 | Sat Nav: 43 Queensborough Gardens, Hyndland, G12 9QP

All measurements and distances are approximate.  
Floorplans are for illustration purposes and may not be to scale.

For the full home report visit [www.corumproperty.co.uk](http://www.corumproperty.co.uk)





WE'RE **SOLD** ON YOUR FUTURE

82 Hyndland Road, G12 9UT

Tel: 0141 357 1888 - Email: [westendnq@corumproperty.co.uk](mailto:westendnq@corumproperty.co.uk) - Fax: 0141 357 1188