



# THE PROPERTY

1 | BEDROOM    1 | BATHROOM  
1 | PUBLIC ROOM

**Set within the iconic St George's Mansions tenement building, 1/2 87 St George's Road is a fantastic, one bedroom first floor flat, located in the ever-popular Woodlands district.**

Entrance to the building is via a well-kept communal hallway with beautiful original tiling. The internal accommodation comprises: entrance vestibule, large reception hallway with storage cupboard off, spacious bay window lounge with lovely open aspects and a large dining/kitchen. There is an excellent sized double bedroom, and finally, a family bathroom with shower over bath.

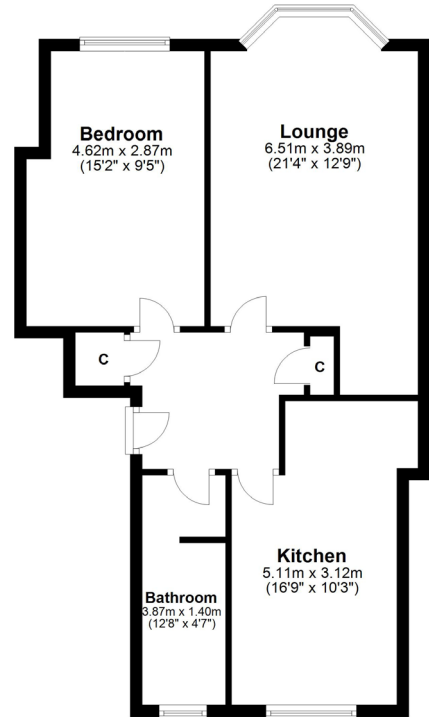
The property has gas central heating, secure entry system and a communal rear area.

## Amenities

Woodlands is well situated for access to the heart of the vibrant West End, including the University of Glasgow, Glasgow School of Art, Kelvingrove Park and the Botanic Gardens. St George's Cross underground and Charing Cross overground railways stations are also located close by, with several bus services linking to the City Centre and beyond.

There are a host of amenities nearby, including an excellent selection of well-established coffee shops, restaurants and wine bars on nearby Gibson Street and Great Western Road, and in Kelvinbridge, Woodlands and Charing Cross area.





WE4441 | Sat Nav: 87 St George's Road, Woodlands, Glasgow, G3 6JA

All measurements and distances are approximate.  
Floorplans are for illustration purposes and may not be to scale.

For the full home report visit [www.corumproperty.co.uk](http://www.corumproperty.co.uk)



c o r u m

WE'RE **SOLD** ON YOUR FUTURE

82 Hyndland Road, G12 9UT

Tel: 0141 357 1888 - Email: [westendnq@corumproperty.co.uk](mailto:westendnq@corumproperty.co.uk) - Fax: 0141 357 1188