



# 6 MOOR ROAD

MILNGAVIE



C O R U M

[www.corumproperty.co.uk](http://www.corumproperty.co.uk)





## THE PROPERTY

**4 | BEDROOMS    2 | BATHROOMS**  
**2 | PUBLIC ROOMS**

**Nestled beautifully within Milngavie's highly regarded Tannoch district, this four bedroom, semi-detached villa has been successfully extended and is ideally placed to take advantage of its serene, yet convenient setting.**

This impressive family home offers seven principal apartments formed over two levels and occupies a commanding plot that incorporates driveway parking as well as front and rear gardens with shed.

The accommodation on offer extends to:

- Welcoming reception hallway
- Wonderfully proportioned, bay-windowed lounge with feature fireplace
- Family / dining room which is semi open plan to the kitchen
- Attractive kitchen with breakfast bar
- Downstairs WC
- Four well-proportioned bedrooms
- Stylish family bathroom with over bath shower
- Predominantly double glazed
- Gas central heating

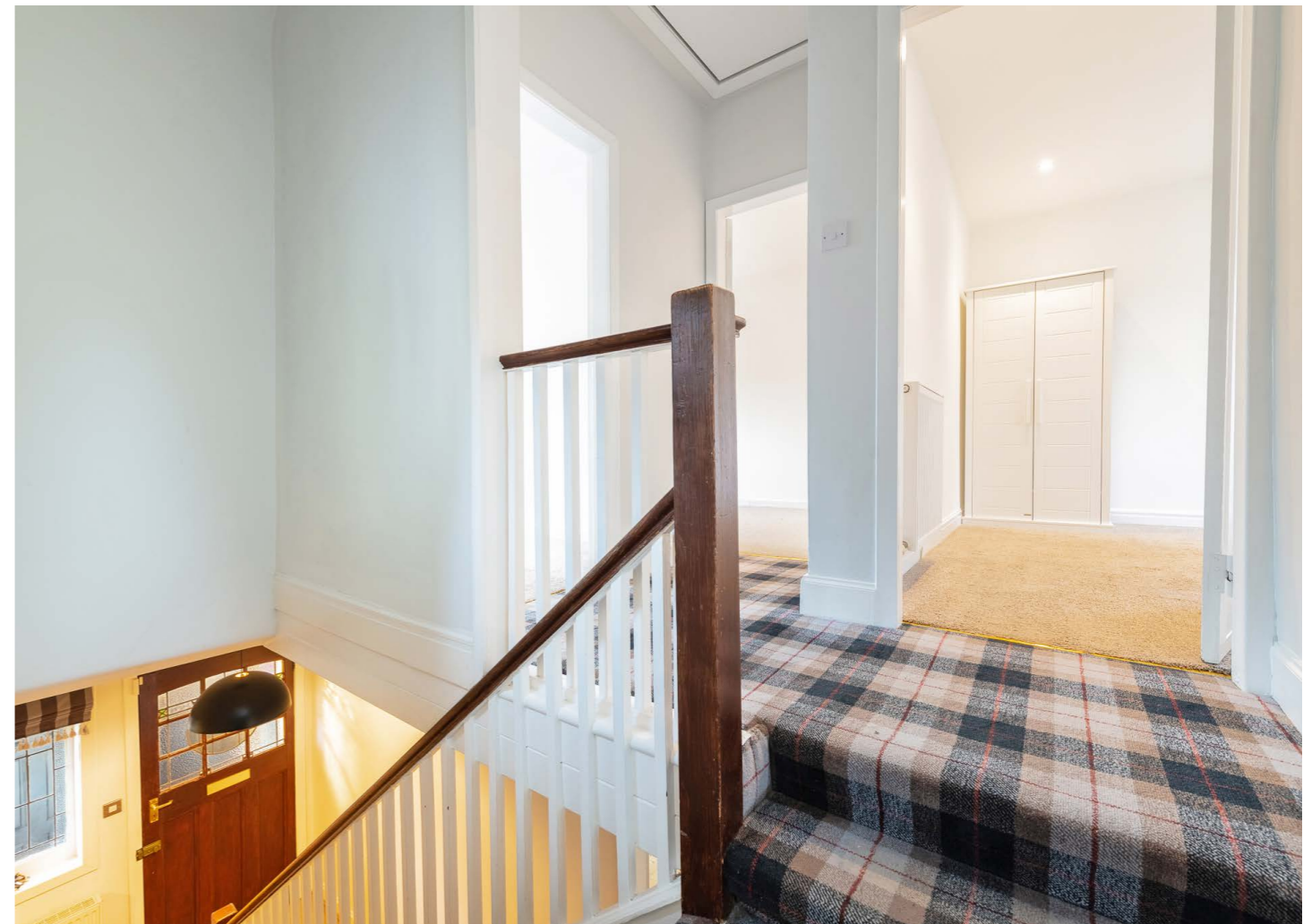




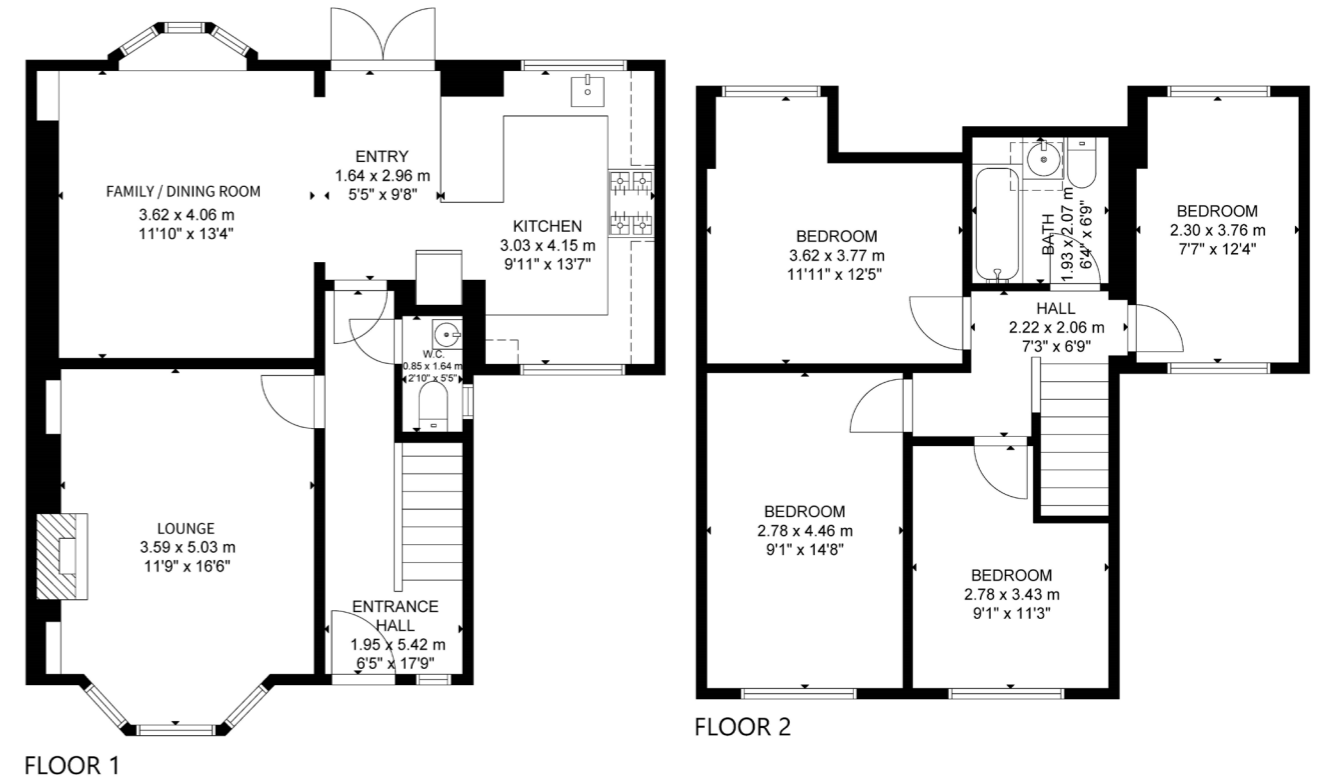












### Local Area

The property is extremely well placed for an extensive array of local amenities. Milngavie's pedestrianised town centre provides a wide selection of facilities and services, including banks, Post Office, delicatessens, restaurants, Marks & Spencer's Food Hall and Waitrose. Lennox Park lies near the centre of Milngavie. Further recreational pursuits include a choice of sports centres/gyms, including Allander Sports centre, Nuffield Health Fitness & Wellbeing Gym, tennis and bowling clubs and an array of reputable golf clubs. Milngavie is home to the starting point of The West Highland Way with further walking and cycling trails close at hand in nearby Mugdock Country Park and around the Allander and Craigmaddie Reservoirs. Milngavie train station offers frequent trains to Glasgow's West End and City Centre, along with a direct service to Edinburgh.

**BD3344** | Sat Nav: 6 Moor Road, Milngavie, G62 8AT

\* All measurements and distances are approximate Floorplans are for illustration purposes and may not be to scale.





WE'RE **SOLD** ON YOUR FUTURE

Corum Bearsden  
4 Canniesburn Toll Bearsden G61 2QU

**Tel:** 0141 942 5888

**Fax:** 0141 943 2288

**Email:** [sales@corumproperty.co.uk](mailto:sales@corumproperty.co.uk)

**[www.corumproperty.co.uk](http://www.corumproperty.co.uk)**

