



# THE PROPERTY

2 | BEDROOMS    1 | BATHROOM  
1 | PUBLIC ROOM

**A truly walk in condition tenement flat, located in a highly convenient Pollokshields address.**

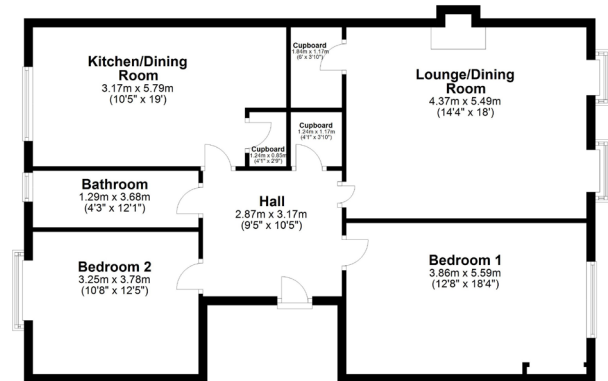
- Two double bedrooms
- Dining kitchen
- Extensive storage cupboards
- Large lounge / dining room
- Secure entrance system
- Communal gardens

## Amenities

122 Darnley Street is only a stone's throw from shops in Pollokshields and Strathbungo where independent coffee houses, restaurants, bars and boutiques can be found. Recreational pursuits within the area are available locally at Maxwell Park, Pollok Country Park and Titwood Lawn Tennis Club. Pollokshields East train station is approximately 350 yards walk, Pollokshields West train station is 0.4 miles away, Shields Road underground station is less than one mile away and the M77 connects the Southside of Glasgow to Scotland's motorway network.







Total area: approx. 97.3 sq. metres (1046.9 sq. feet)



**SS3400** | Sat Nav: 2/1, 122 Darnley Street, Pollokshields, G41 2SX

All measurements and distances are approximate.  
Floorplans are for illustration purposes and may not be to scale.

For the full home report visit [www.corumproperty.co.uk](http://www.corumproperty.co.uk)



WE'RE **SOLD** ON YOUR FUTURE

247 Kilmarnock Road Shawlands G41 3JF

Tel: 0141 636 7588 - Email: [shawlands@corumproperty.co.uk](mailto:shawlands@corumproperty.co.uk) - Fax: 0141 636 7589