



# THE PROPERTY

2 | BEDROOMS    2 | BATHROOMS  
2 | PUBLIC ROOMS

**Flat 3/7 10 Park Circus Place is a truly magnificent, two bedroom third floor flat that combines modern and traditional architecture, with private underground parking, situated in the highly regarded Park House development.**

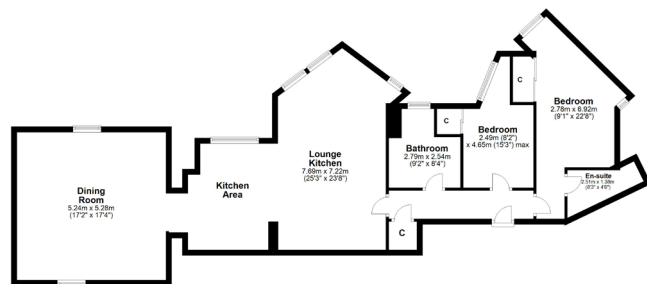
The building is entered via secure entry system to a well-presented communal hallway with stair and lift access to all levels. The internal accommodation comprises; welcoming reception hallway with storage cupboard and a stunning and spacious open plan living/kitchen that is flooded with natural light from the array of superb outlooks across the West End. There is a fabulous large dining room located in the original church tower, perfect for entertaining, and there are two good sized bedrooms, all with built in storage, with the principal bedroom also benefitting from en suite shower room. Finally, there is a wonderful family bathroom with over bath shower.

The flat has gas central heating, double glazing, a private, allocated underground tandem parking space and lift access to all floors. Viewing is highly advised to appreciate the level of accommodation on offer.

## Amenities

One of the main attributes of the Park area is the accessibility of both the West End's and City Centre's wide range of amenities. The Park District offers a leafy tranquil surrounding, yet is only minutes from access to the M8 at Charing Cross.





**WE4469** | Sat Nav: 10 Park Circus Place, Park, Glasgow, G3 6AN

All measurements and distances are approximate.  
Floorplans are for illustration purposes and may not be to scale.

For the full home report visit [www.corumproperty.co.uk](http://www.corumproperty.co.uk)





WE'RE **SOLD** ON YOUR FUTURE

82 Hyndland Road, G12 9UT

Tel: 0141 357 1888 - Email: [westendeng@corumproperty.co.uk](mailto:westendeng@corumproperty.co.uk) - Fax: 0141 357 1188