



4 UNDERCLIFF COURT

WEMYSS BAY



C O R U M

www.corumproperty.co.uk



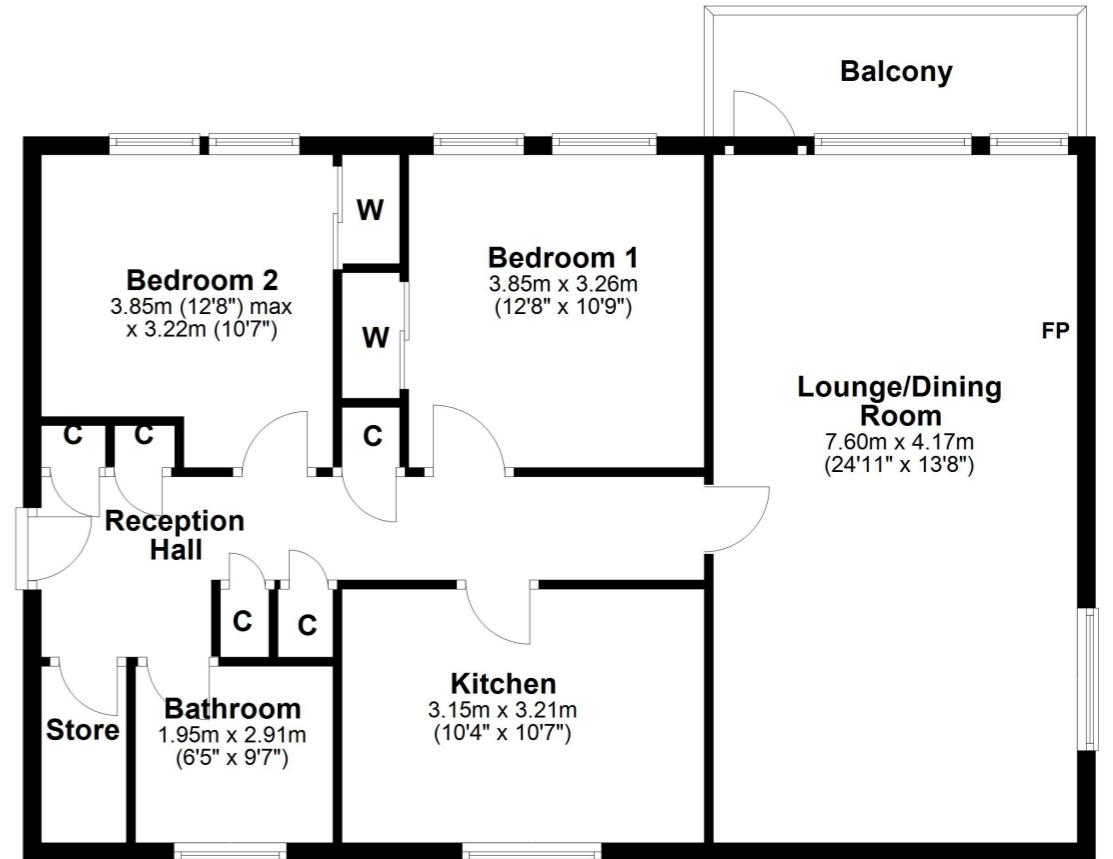
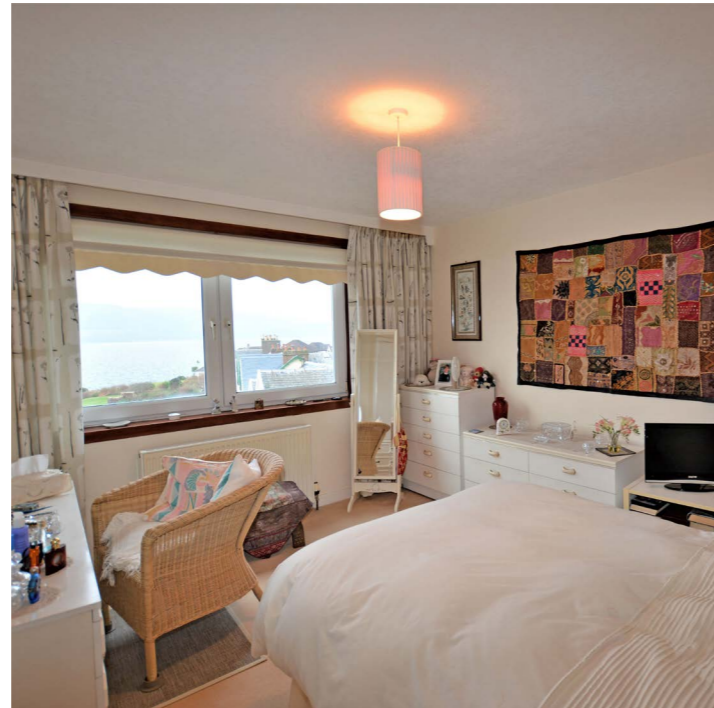
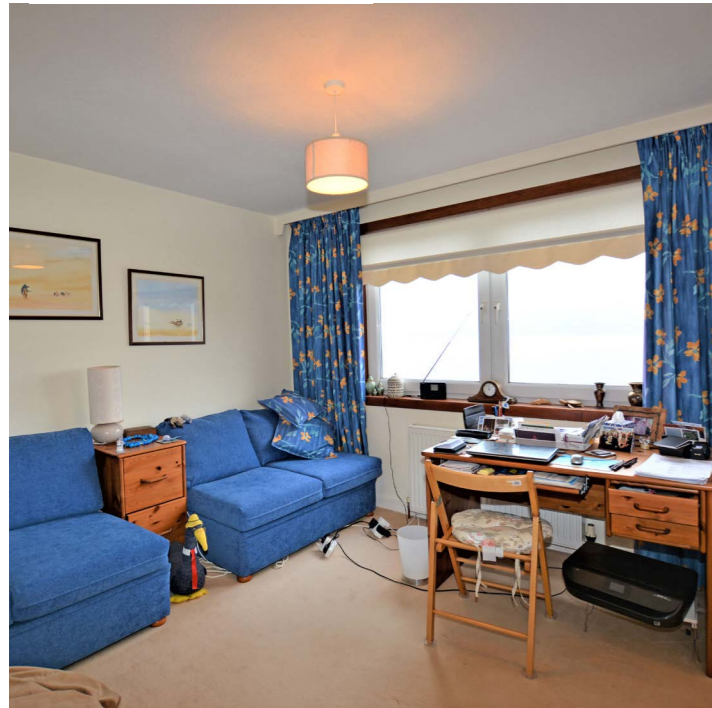
4 UNDERCLIFF COURT, WEMYSS BAY

2 | BEDROOMS 1 | BATHROOM 1 | PUBLIC ROOM

Located adjacent to the banks of the Clyde and enjoying fabulous water views from the lounge, external balcony and both bedrooms, 4 Undercliff Court is a traditional top floor apartment presented in good order that boasts a flexible layout with an internal dimension seldom seen in more modern developments.

The property is well placed for ease of access to all of Wemyss Bay's amenities and the mainline train terminal with its direct links to Glasgow is within a mile from the property. In more detail the accommodation on offer comprises communal entrance hallway entered by a recently installed video entry system. Upon entering, a reception hallway with six storage cupboards gives access to a spacious lounge and dining room laid on an open plan basis. The lounge has a picture window and glazed door which opens to a broad external balcony boasting fabulous water views. The kitchen is fitted with a range of wall and base units and integrated appliances to include gas hob, double oven, microwave and plumbing for a washing machine. The property has two double bedrooms both with built in wardrobe storage and superb water views. The bathroom is fitted with a three piece suite to include WC, wash hand basin and bath with over bath shower. In addition to the above the property has double glazing, gas central heating and a garage located in a block to the rear of the development.





Local Area

Wemyss Bay offers a range of amenities, recreational facilities and swift travel links to Glasgow via bus, train and the upgraded road network. There is also a regular ferry service to the Island of Bute. For those with a keen sailing interest, Inverkip Marina which has a 600 berth facility and offers some of the best sailing in the west of Scotland is located less than 2 miles away. The bustling holiday town of Largs, a short distance away by road, has a host of amenities as well as a regular service to the beautiful island of Cumbrae.

LA1574 | Sat Nav: 4 Undercliff Court, Wemyss Bay, PA18 6AL

* All measurements and distances are approximate Floorplans are for illustration purposes and may not be to scale.



WE'RE **SOLD** ON YOUR FUTURE

Corum Largs
66 Main Street, Largs KA30 8AL

Tel: 01475 675 001
Fax: 01475 674 893
Email: largs@corumproperty.co.uk

www.corumproperty.co.uk

