



0/1, 11 DARNLEY GARDENS

POLLOKSHIELDS

THE PROPERTY

3 | BEDROOMS 1 | BATHROOM
1 | PUBLIC ROOM

Occupying an easily accessible ground floor position in this attractive red sandstone building, a period style townflat providing accommodation within four main apartments.

- Superb 4 apartment townflat
- Bright open views
- Outstanding traditional features
- Beautiful communal gardens
- 3 double bedrooms
- Modern kitchen and bathroom

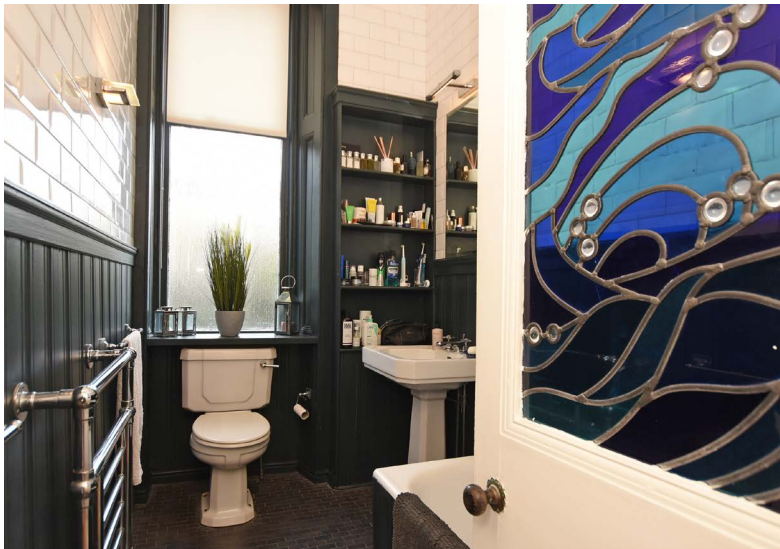
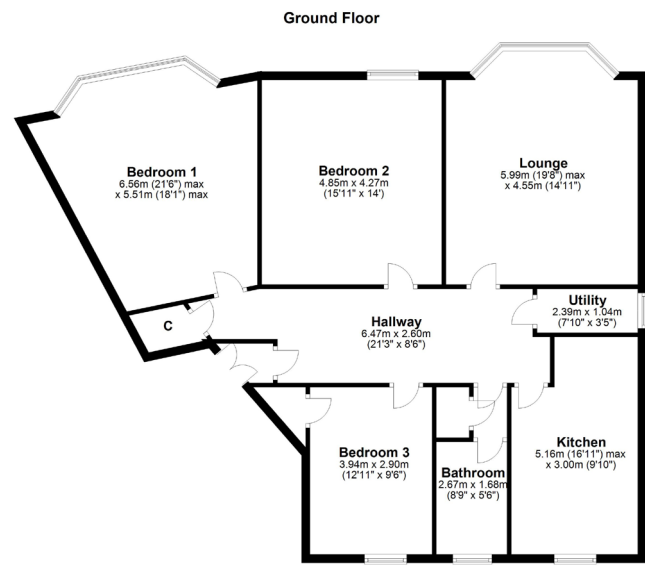
Amenities

11 Darnley Gardens is conveniently positioned within walking distance of shops and amenities upon Nithsdale Road/Kildrostan Street where a number of coffee shops, restaurants and delicatessens are found. The Morrisons store at Crossmyloof is located a short distance away providing more extensive amenities.

Recreational pursuits at Queens Park, Maxwell Park and the World famous Pollok Park are all within a 1 mile radius of the property.

Pollokshields West railway station is minute's walk away from the flat, allowing easy access to the City Centre or deeper into the Southside, whilst there are frequent bus services nearby.





SS4071 | Sat Nav: 0/1, 11 Darnley Gardens, Pollokshields, G41 4NQ

All measurements and distances are approximate.
 Floorplans are for illustration purposes and may not be to scale.

For the full home report visit www.corumproperty.co.uk



c o r u m

WE'RE **SOLD** ON YOUR FUTURE

247 Kilmarnock Road Shawlands G41 3JF

Tel: 0141 636 7588 - Email: shawlands@corumproperty.co.uk - Fax: 0141 636 7589