





corum



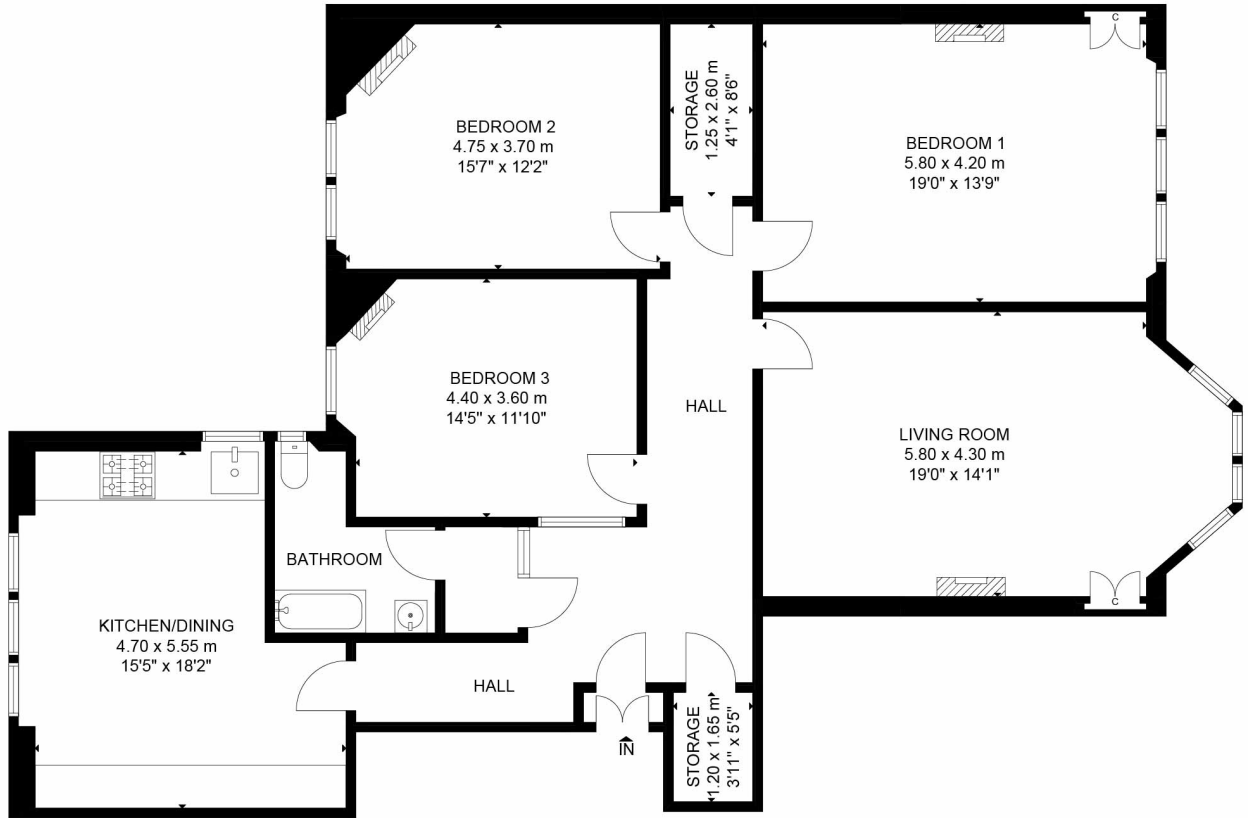
2/1 60 NOVAR DRIVE, HYNDLAND

3 | BEDROOMS 1 | BATHROOMS 1 | PUBLIC ROOM

A beautiful three bedroom, second floor flat that has been upgraded to a high standard by the current owners, located in the highly desirable Hyndland district.

2/1 60 Novar Drive is a beautiful three bedroom, second floor flat that has been upgraded to a high standard by the current owners, located in the highly desirable Hyndland district. Entrance to the building is via a residents-controlled entry system leading to an immaculate communal hallway with decorative tiling. The internal accommodation comprises; large welcoming reception hall with excellent storage off, beautiful bay windowed sitting room with feature fireplace and original hardwood flooring, and a stunning dining kitchen to the rear, perfect for entertaining. There are three well-proportioned double bedrooms with the master being significantly larger and finally, a newly installed family bathroom with original stain glass door completes the accommodation on offer.

In addition, the property benefits from gas central heating and on street permit parking is available to request via Glasgow City Council.



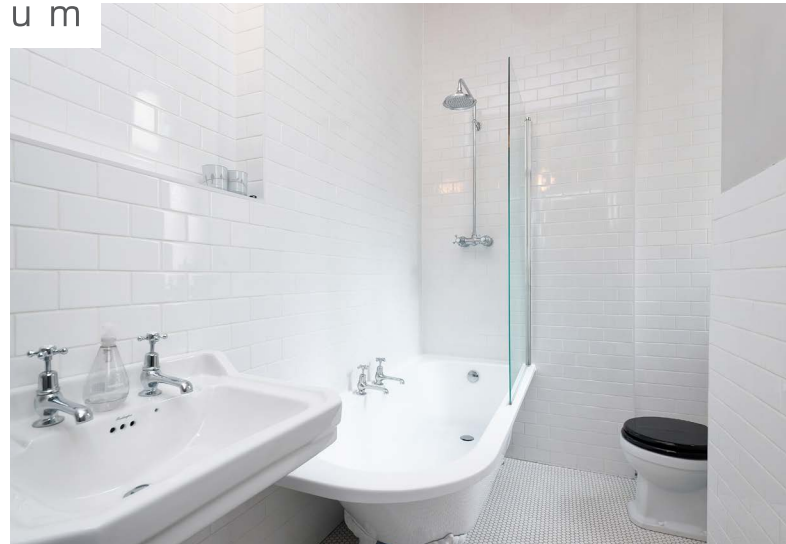
SECOND FLOOR

WE4489 | Sat Nav: 2/1 60 Novar Drive, Hyndland, Glasgow, G12 9TZ

All measurements and distances are approximate. Floorplans are for illustration purposes and may not be to scale.



corum





LOCAL AREA & AMENITIES

Hyndland is highly regarded as the social hub of the West End. The area has been truly transformed in the last ten years with a number of excellent bars and restaurants including, Epicures by Cail Bruich, Cottiers and Caffè Parma. There is also a variety of independent shops and boutiques, including Bluebellgray, Amber & Black, Silks, Brenda Muir, Pampas, Biscuit Clothing and independent retail stores such as Bauen Design, offering stunning bespoke kitchens, and Chelsea McLaine Interior Designers.

There is great public transport in the area with a range of bus routes on Hyndland Road and Hyndland Railway Station providing links to Glasgow City Centre, Edinburgh and beyond. Hyndland is within close proximity to Byres Road, which offers a further selection of shops and amenities including Hillhead Subway Station. Glasgow University is situated on University Avenue, just off Byres Road, providing world class further education.

Sport and recreational facilities can be found at Hillhead Sports Club and The Western Lawn Squash & Tennis Club on Hyndland Road.

The area provides some of the best traditional tenements, conversions and townhouses in Glasgow, let alone the West End.

For The Full Home Report Visit:

WWW.CORUMPROPERTY.CO.UK



corum

WE'RE **SOLD** ON YOUR FUTURE

82 Hyndland Road, G12 9UT

Tel: 0141 357 1888 - Email: westendnq@corumproperty.co.uk - Fax: 0141 357 1188