



THE PROPERTY

2 | BEDROOMS 1 | BATHROOM
1 | PUBLIC ROOM

An immaculate two bedroom upper cottage flat occupying a prime location just a short distance from Maybole High Street.

This a rare opportunity to acquire a spacious and substantial upper flat with its own private garden and direct access to all the towns amenities.

The property offers generous proportions and a flexible layout that would suit a variety of potential purchasers. The accommodation is formed around a broad upper reception hall and there are generous ceiling heights which really accentuate the feeling of space.

The property has recently been redecorated in calm neutral tones and has new carpets and floor coverings throughout.

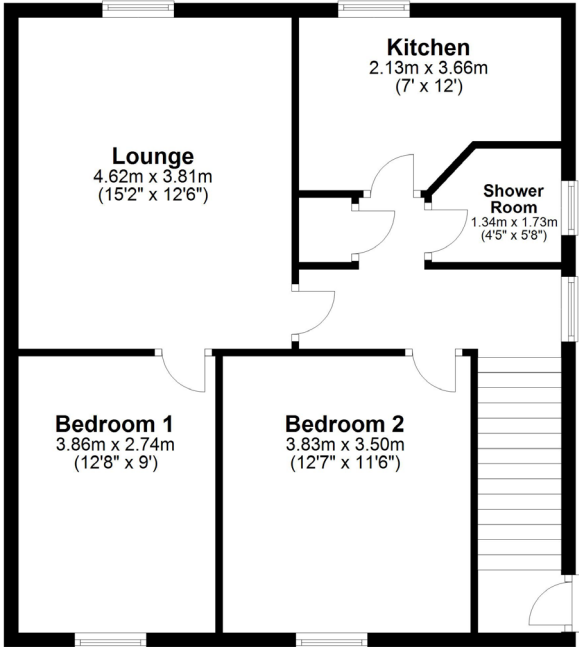
In more detail the accommodation comprises entrance hall, upper reception hall with storage large lounge with feature fireplace, modern fitted kitchen, two double bedrooms, new shower room, floored and lined loft area, double glazing, gas central heating.

Outside there is an easily maintained rear garden with paved paths and grassed area.





First Floor



AY4038 | Sat Nav: 44 The Loaning, Maybole, KA19 7HX

All measurements and distances are approximate. Floorplans are for illustration purposes and may not be to scale.

For the full home report visit www.corumproperty.co.uk



c o r u m

WE'RE **SOLD** ON YOUR FUTURE

14 Beresford Terrace, Ayr KA7 2EG

Tel: 01292 880 888 - Email: ayr@corumproperty.co.uk - Fax: 01292 613 588