



THE PROPERTY

2 | BEDROOMS 1 | BATHROOM
1 | PUBLIC ROOM

0/1 35 Woodlands Drive is a stunning, two-bedroom ground floor tenement flat, that has been meticulously upgraded by the current owners, in the highly sought-after Woodlands district. Entrance to the building is via a secure entry system leading to a well-kept communal residents' hallway. The internal accommodation comprises: a large welcoming reception hallway with storage cupboard off, lovely bay window lounge with useful study/cupboard off and a modern dining kitchen, perfect for entertaining and family living. There are two good sized double bedrooms and finally, a stunning family bathroom with bath and separate walk-in shower completes the accommodation on offer.

The flat has gas central heating, secure door entry system, exclusive use of the front garden and well-kept communal rear gardens.

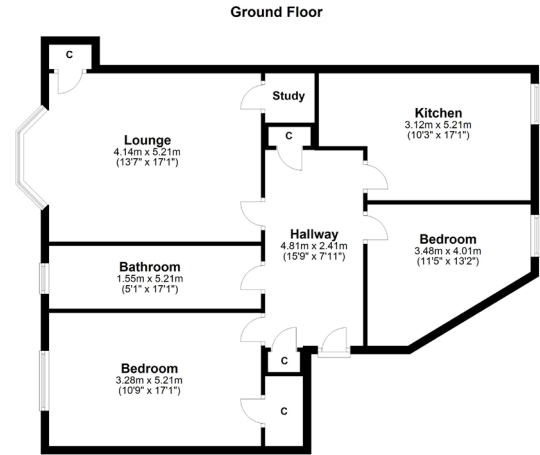
Amenities

Woodlands is well situated for access to the heart of the vibrant West End, including the University of Glasgow, Kelvingrove Park and the Botanic Gardens, linked by Kelvin Walkway along the River Kelvin. Kelvinbridge Underground Station is also located close by, with several bus services linking to the City Centre and beyond.

There are a host of amenities nearby, including an excellent selection of well-established coffee shops, restaurants and wine bars on nearby Gibson Street and Great Western Road, and in Kelvinbridge and the Woodlands area.

Byres Road is also located nearby, offering a further range of shops and amenities, including a Waitrose, Marks & Spencer, Tesco Metro and boutique shops.





WE4529 | Sat Nav: 0/1 35 Woodlands Drive, Woodlands, Glasgow, G4 9DN

All measurements and distances are approximate.
Floorplans are for illustration purposes and may not be to scale.

For the full home report visit www.corumproperty.co.uk



WE'RE **SOLD** ON YOUR FUTURE

82 Hyndland Road, G12 9UT

Tel: 0141 357 1888 - Email: westendnq@corumproperty.co.uk - Fax: 0141 357 1188