



THE PROPERTY

1 | BEDROOM 1 | BATHROOM
1 | PUBLIC ROOM

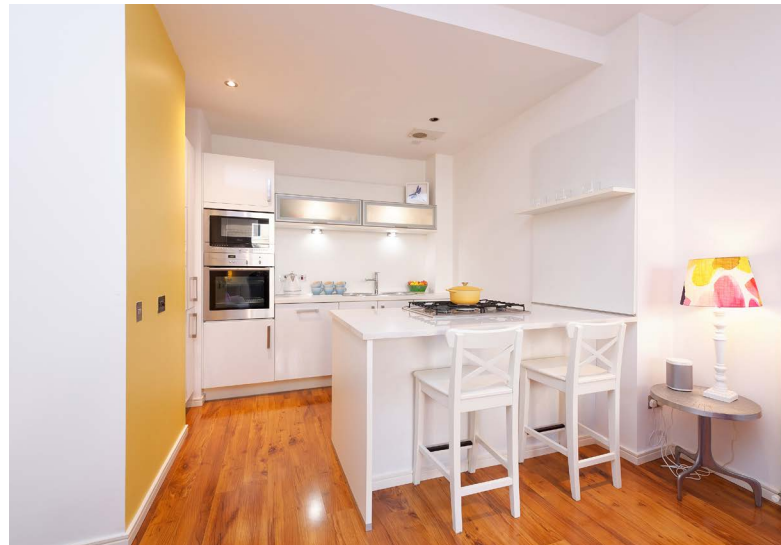
Situated in the heart of Park, within the infamous Park House development by highly regarded developers Noah, and in conjunction with international architects RMJM, this contemporary and stylish one bedroom ground floor apartment is in immaculate condition throughout.

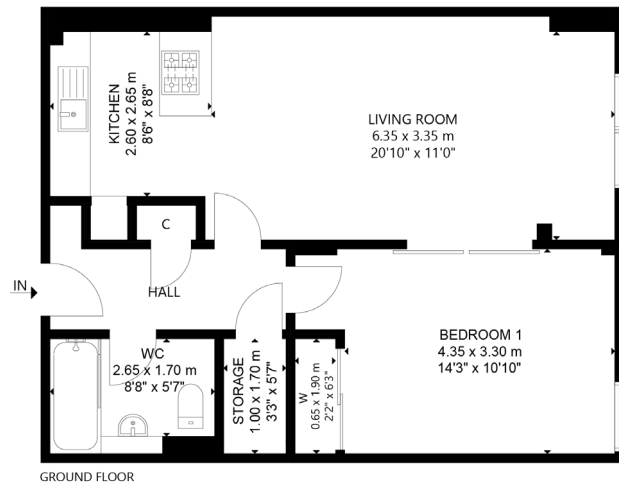
Initially accessed via a contemporary communal hallway with guest/ residents seating area, which in turn leads to the apartment on the ground floor. The internal accommodation comprises: a smart reception hall with storage off and a spacious open plan lounge/ kitchen with ample space to dine and study. There is a large, main bedroom with fitted wardrobes and modern bathroom with three-piece suite.

In addition, the property has gas central heating, double glazing and hardwood flooring.

Amenities

The Park District area is bordered by the City Centre, Kelvingrove, Kelvingrove Park and Woodlands. Park Circus was built between 1855 and 1863. Many of the area's large townhouses which were converted to offices during the latter half of the 20th century are being returned to residential use. It was declared a Conservation Area in 1970.





WE4535 | Sat Nav: 10 Park Circus Place, Park, G3 6AN

All measurements and distances are approximate.
Floorplans are for illustration purposes and may not be to scale.

For the full home report visit www.corumproperty.co.uk



corum

WE'RE **SOLD** ON YOUR FUTURE

82 Hyndland Road, G12 9UT

Tel: 0141 357 1888 - Email: westendenq@corumproperty.co.uk - Fax: 0141 357 1188