



10 MOUNT CHARLES CRESCENT

AYR



C O R U M

www.corumproperty.co.uk



THE PROPERTY

5 | BEDROOMS

2 | BATHROOMS

3 | PUBLIC ROOMS

An absolutely stunning five bedroom detached villa set in private landscaped garden grounds perfectly located within the highly regarded Mount Charles Crescent in Alloway.

This impressive property sits in a large plot which affords a high degree of privacy to the rear. The original house has been successfully extended by the present owners to create a bespoke family home that enjoys a flexible and adaptable layout combined with a high quality specification.

It is a substantial home with accommodation that extends to over 2200 sq ft therefore would ideally suit the medium to large family. The focal point of the house is an immediately engaging open plan designer kitchen/dining/garden room arrangement which also provides access to the formal lounge and lends the accommodation a real feeling of flow.

There are five bedrooms in total including a superb master bedroom with fitted wardrobes and en suite bathroom as well as a downstairs guest bedroom that could also serve as a home office. The interior is finished in calm neutral colours and is double glazed. A Worcester boiler provides gas fired central heating.

In detail, reception hall, Cloaks/WC, formal lounge, open plan dining kitchen, family/garden room with two sets of patio doors, large utility with boot room, downstairs bedroom five, upstairs four bedroom, master en suite shower room, modern family bathroom.

Outside the gardens offer a medium sized grassed area and large private driveway to the front which provides private parking and access to an integral double garage with remote control door. The extensive rear garden is bordered by mature conifers. There is a sheltered patio, large lawn, mature shrubs and well stocked borders.



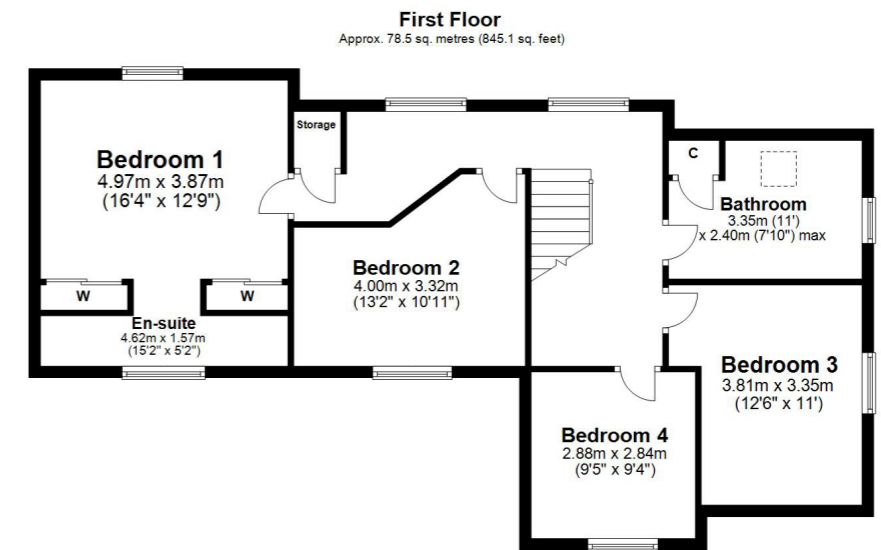
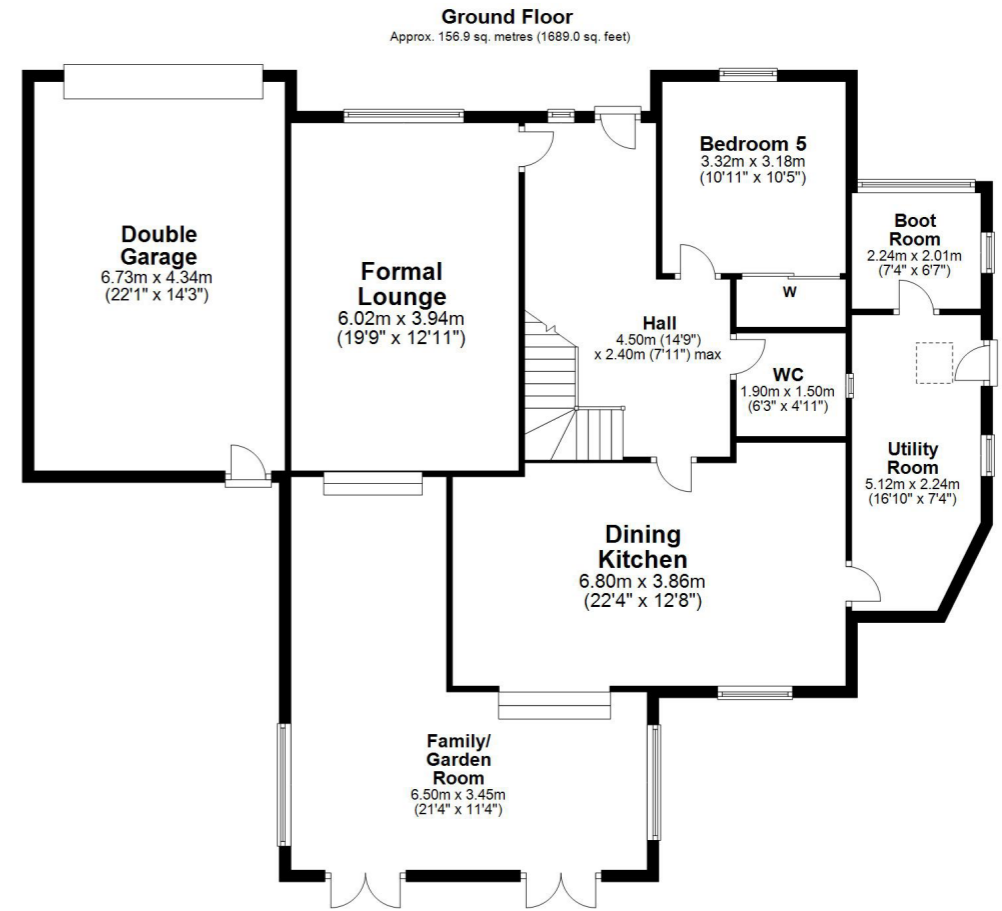












Local Area

Mount Charles Crescent is a first class residential area situated a short distance from Alloway village and less than two miles from Ayr town centre when you will find a comprehensive range of amenities. Alloway itself has a busy post office and grocery store, Poets corner cafe, gift shop and beauticians as well as sporting facilities at Cambusdoon Sports Club and Ayr Rugby Club.

Directions

From the agent's office on Beresford Terrace turn first right into Bellevue Street. Continue to the bottom of Bellevue Crescent and turn left into Racecourse Road. Proceed along Racecourse Road, which becomes Doonfoot Road for approximately one mile and turn left into Greenfield Avenue. Turn first right into Mount Charles Crescent. Number 10 is on the right hand side.

AY4049 | Sat Nav: 10 Mount Charles Crescent, Ayr, KA7 4NY

* All measurements and distances are approximate Floorplans are for illustration purposes and may not be to scale.



WE'RE **SOLD** ON YOUR FUTURE

Corum Ayr
14 Beresford Terrace, Ayr KA7 2EG

Tel: 01292 880 888

Fax: 01292 613 588

Email: ayr@corumproperty.co.uk

www.corumproperty.co.uk


c o r u m