



**11 GLENALLA CRESCENT**

DOONBANK, ALLOWAY

[www.corumproperty.co.uk](http://www.corumproperty.co.uk)







**3 | BEDROOMS**

**2 | BATHROOMS**

**3 | PUBLIC ROOMS**

**An impressive modern detached bungalow providing exceptionally spacious, all on the level accommodation, generous south facing gardens, driveway parking and detached double garage.**

Number 11 is a modern detached bungalow presented to the market in very good decorative order and providing flexible accommodation particularly suited to those clients seeking all on the level accommodation without compromising on space.

Features and benefits include well proportioned apartments throughout, a fitted kitchen, gas central heating with an 'Ideal' boiler, double glazing, conservatory overlooking the rear garden, fitted wardrobes/cupboard space in all three bedrooms, neutral decoration and alarm system.

The accommodation extends to an entrance vestibule, L-shaped reception hallway with cloaks cupboards off, front facing lounge, dining room, conservatory, dining sized kitchen, three bedrooms, three piece bathroom and three piece shower room.

Externally the front garden is laid to lawn with shrubbery border and chipped driveway parking providing space for several vehicles and culminating in the detached double garage (17' x 17' with two automatic up and over doors). The extensive rear garden enjoys a high level of privacy and is predominantly lawned with generous patio area, shrubbery borders, pond and fruit trees including apple and plum. Included in the sale will be the greenhouse with vine.





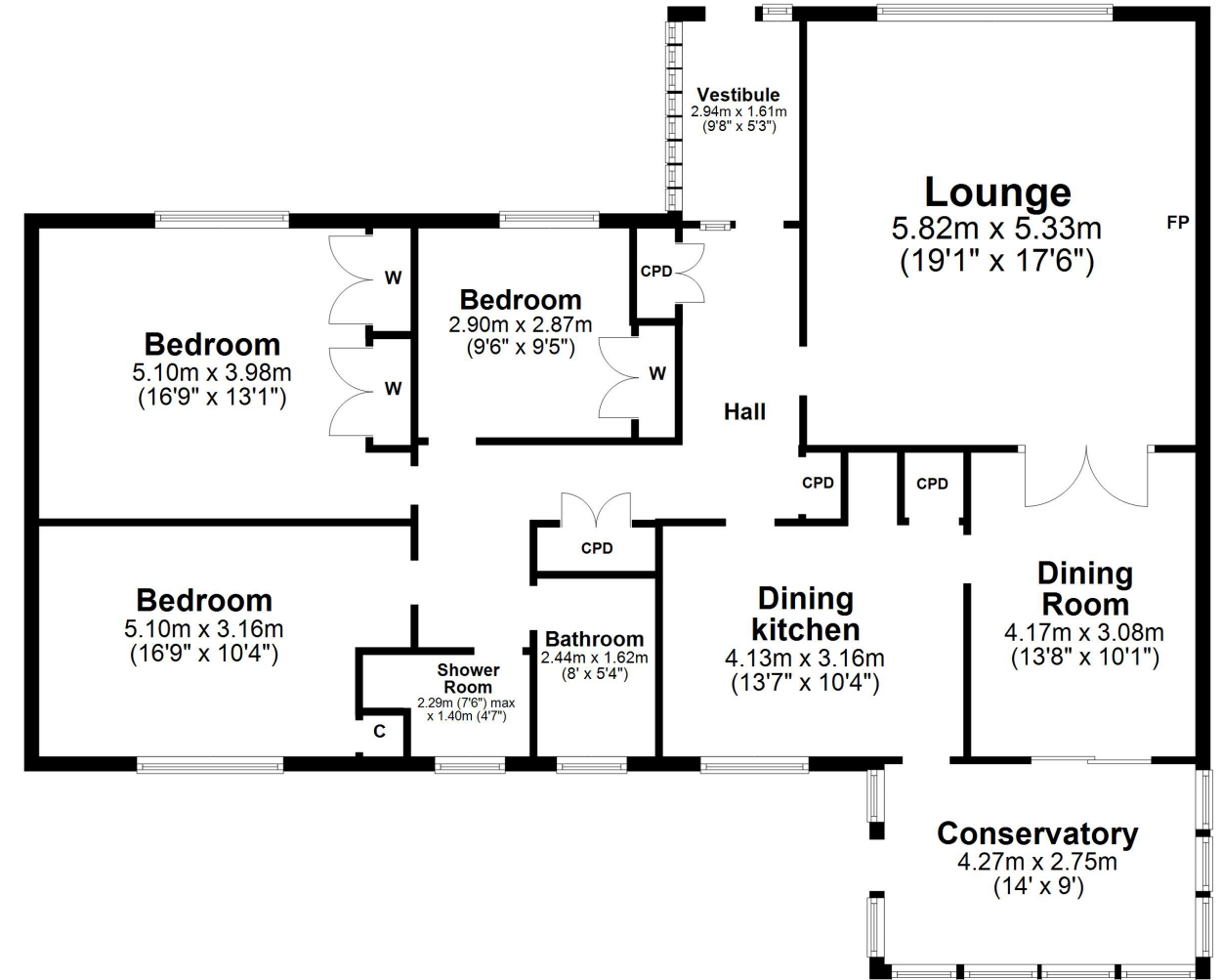












Glenalla Crescent is a truly picturesque and highly sought after residential address comprising of similarly styled villas and bungalow set in generous plots looking out over attractive green spaces. The location is well placed for a wide range of amenities including the historic village of Alloway which is approximately 0.5 miles distant and provides amenities including a highly regarded primary school, village shop with Post Office, pharmacy and Doctors surgery.

**AY4083** | Sat Nav: 11 Glenalla Crescent, Doonbank, Alloway, KA7 4DA

For the full home report visit [www.corumproperty.co.uk](http://www.corumproperty.co.uk)

\* All measurements and distances are approximate Floorplans are for illustration purposes and may not be to scale.





WE'RE **SOLD** ON  
YOUR FUTURE



Corum Ayr  
14 Beresford Terrace, Ayr, KA7 2EG

**Tel:** 01292 880 888

**Email:** [ayr@corumproperty.co.uk](mailto:ayr@corumproperty.co.uk)

[www.corumproperty.co.uk](http://www.corumproperty.co.uk)