



# APARTMENT 9, DUNLOP MANOR

DUNLOP

[www.corumproperty.co.uk](http://www.corumproperty.co.uk)





2 | BEDROOMS

2 | BATHROOMS

1 | PUBLIC ROOM

**A truly immaculate traditional top floor apartment extending to approximately 1500 sq ft with a luxurious level of finish, well proportioned apartments throughout and enjoying an idyllic semi-rural position close to Dunlop.**

Apartment 9 is a most impressive second floor conversion forming part of Dunlop Manor. The current house was constructed in 1834 for Sir James Dunlop by Glasgow architect James Hamilton. Beginning in 2014, the property has been developed by Laurel Homes to an exacting standard with quality craftsmanship and an attention to detail rarely seen. Period features have been preserved and there are stunning skylights and fantastic elevated views out across open countryside. Further modern features include a bespoke fitted Poggenpohl kitchen by J S Geddes (integrated appliances), quality sanitary ware by Porcelanosa, double glazed sash and case windows, mains gas central heating, a secure entry system and a master bedroom en suite.

In summary, the accommodation extends to an entrance vestibule, an inner hallway, an incredible lounge with triple aspect windows and space for dining, a luxury fitted kitchen, two double bedrooms, including one with an en suite shower room, and a bathroom suite.

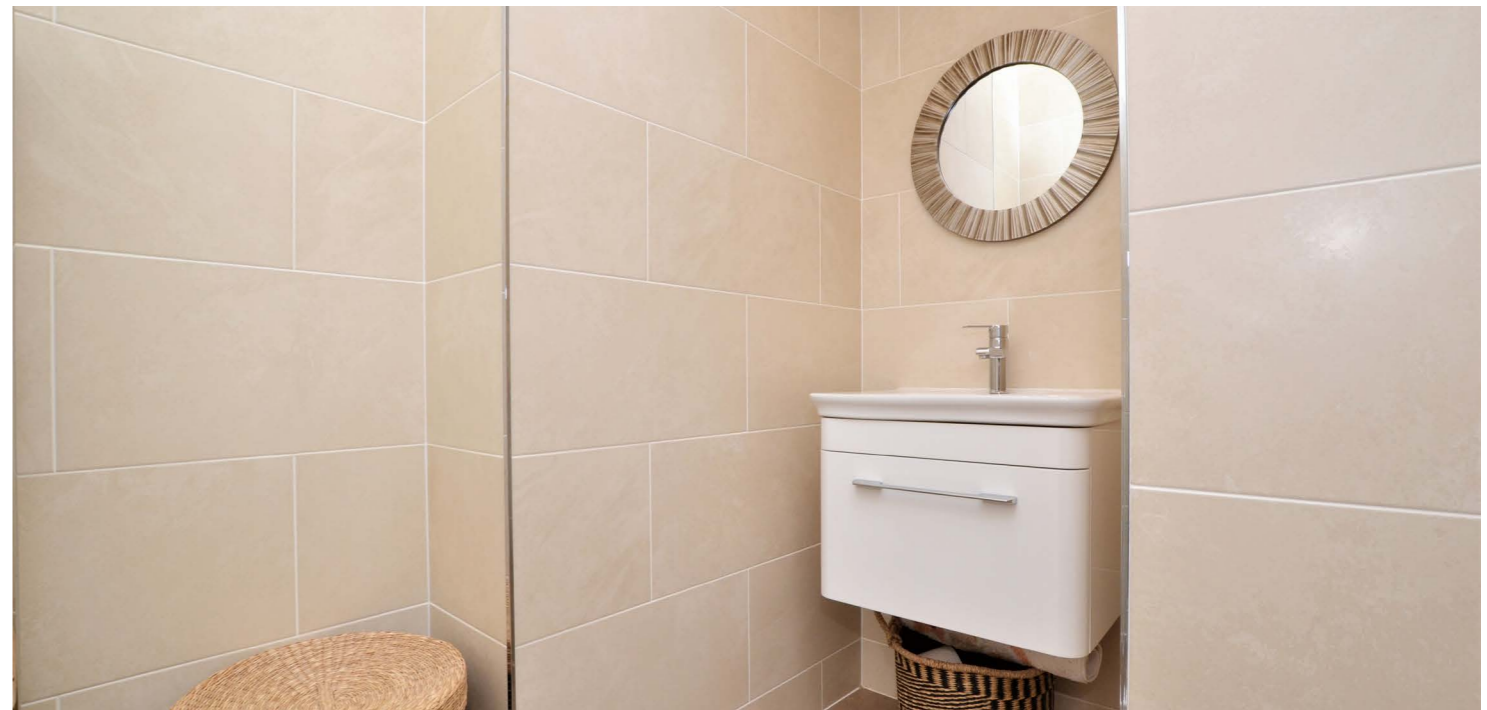
Externally the property is set in an idyllic rural location surrounded by rolling Ayrshire countryside. In addition there are communal landscaped gardens, two private car parking spaces and visitor parking.





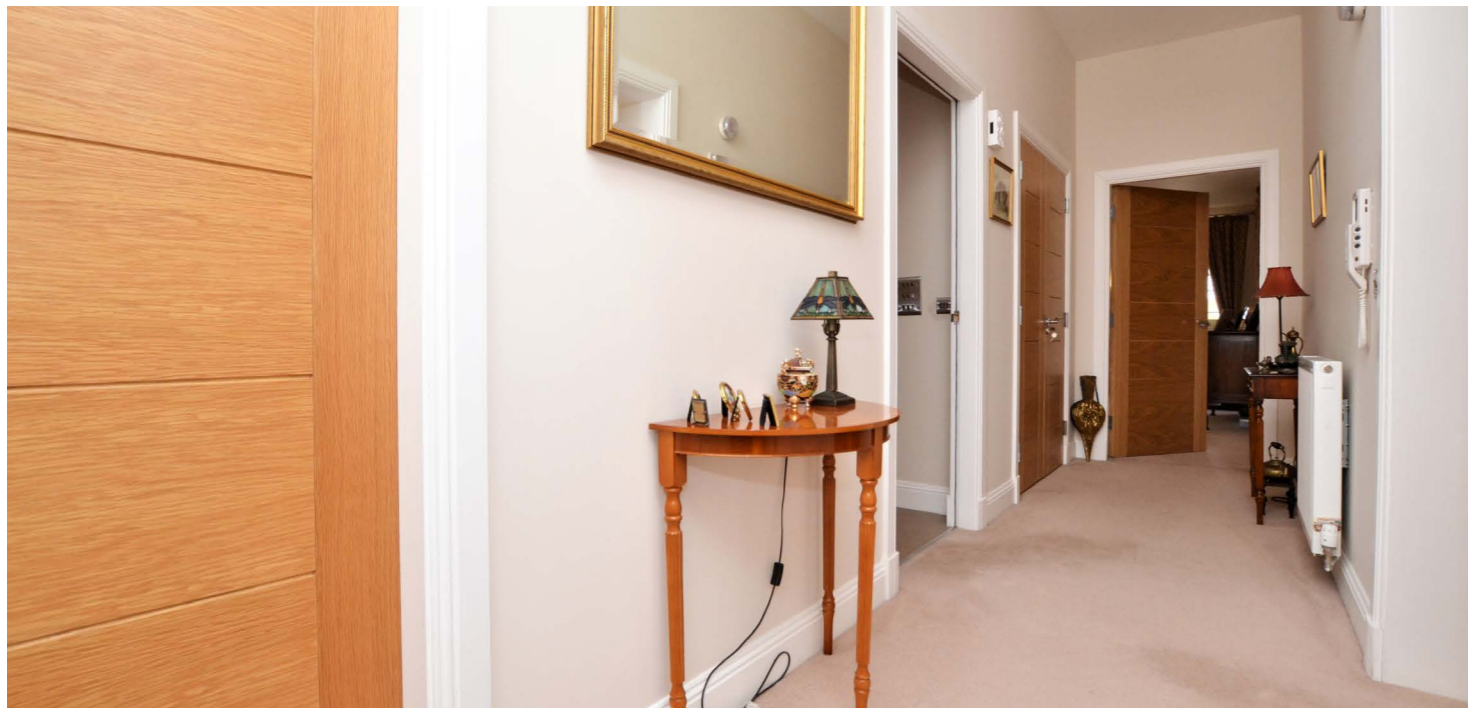


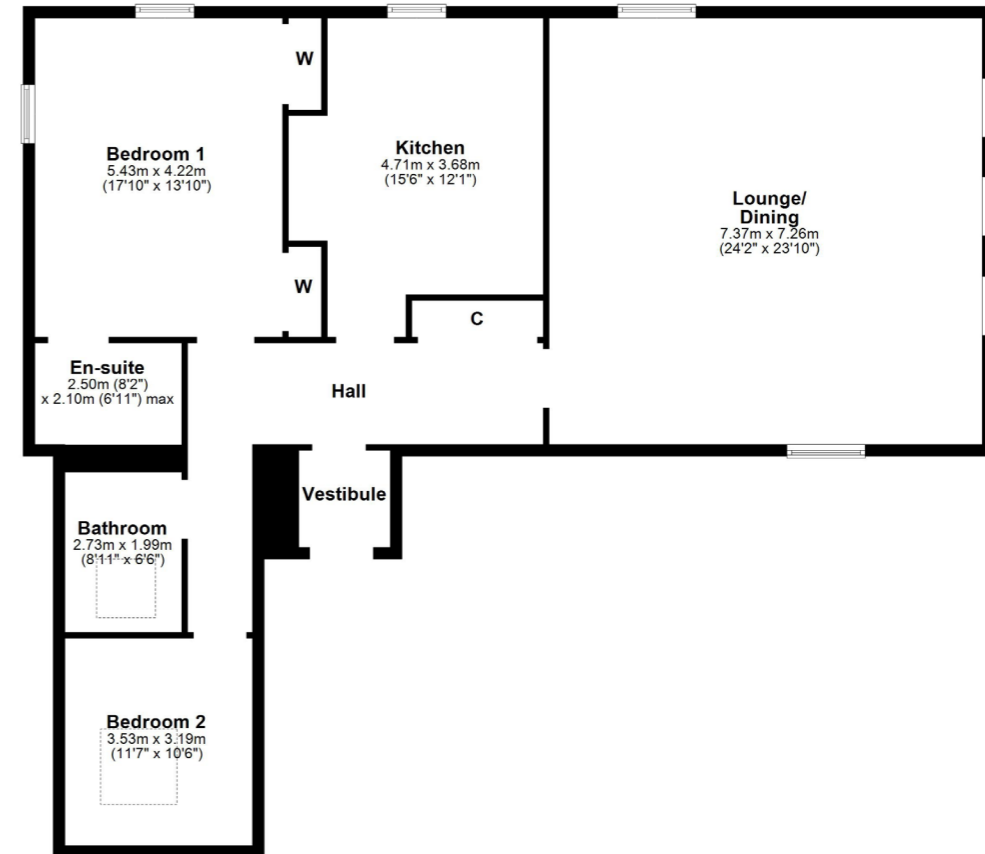












Dunlop Manor and Country Estate is set in unspoilt rural Ayrshire less than two miles from the picturesque village of Dunlop, which provides a range of excellent local facilities including a primary school and a fast (21 minutes) and frequent direct rail link to Glasgow, whilst the wider amenities of Kilmarnock to the south are just 14 minutes away.

Dunlop lies on the A735 seven miles north of Kilmarnock and is ideally located for access to the M77 for onward road journeys to Glasgow, Edinburgh and the south. Glasgow Prestwick Airport, which offers flights to both domestic and international destinations is around 25 minutes drive away.

Ayrshire is renowned for its many golf courses including Turnberry and Royal Troon and, with marinas in Troon, Largs, Ardrossan and Inverkip, there are excellent yachting facilities. In addition, the popular racecourse at Ayr, which annually hosts the Scottish Grand National and Scottish Gold Cup is also within easy access.

**TR1506** | Sat Nav: Dunlop Manor, Dunlop, KA3 4BU

For the full home report visit [www.corumproperty.co.uk](http://www.corumproperty.co.uk)

\* All measurements and distances are approximate Floorplans are for illustration purposes and may not be to scale.

WE'RE **SOLD** ON  
YOUR FUTURE



c o r u m

Corum Troon  
29 Portland Street, Troon, KA10 6AA

**Tel:** 01292 310 010

**Email:** [troon@corumproperty.co.uk](mailto:troon@corumproperty.co.uk)

[www.corumproperty.co.uk](http://www.corumproperty.co.uk)