



MUIRSHIEL, COTTAGE 24, LOVE AVENUE

QUARRIERS VILLAGE

www.corumproperty.co.uk



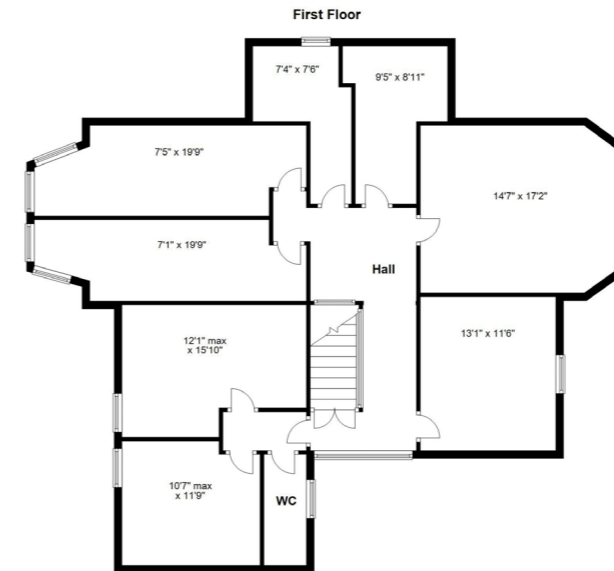
6 | BEDROOMS
3 | BATHROOMS
6 | PUBLIC ROOMS

An elegant traditional detached stone cottage positioned in the conservation area of Quarriers Village that offers an opportunity for redevelopment and or conversion in this unique setting.

- Substantial detached stone former care home in unique setting
- Development or conversion potential subject to obtaining local authority consent
- Substantial accommodation extending to 3488 sq ft
- Vestibule, hallway, six ground floor rooms, two bathrooms, kitchen and utility
- Six rooms on upper floor, WC and 2 storerooms

Amenities

Quarriers is a peaceful residential hamlet between Bridge of Weir and Kilmacolm. There are good road links to the local villages with primary education within Houston, Bridge of Weir, Port Glasgow and Kilmacolm which is also home to the prestigious St Columba's School offering private education at nursery, primary and secondary levels. There are road links via Bridge of Weir towards the A737 dual carriageway, Glasgow International Airport and M8 motorway network leading to Glasgow city centre.



Sat Nav:
Muirshiel, Cottage 24, Love Avenue, Quarriers Village, PA11 3TL

BW2041

*All measurements and distances are approximate. Floorplans are for illustration purposes and may not be to scale.

For the full home report visit
www.corumproperty.co.uk



WE'RE **SOLD** ON
YOUR FUTURE



Corum Bridge Of Weir
2 Windsor Place, Main Street, Bridge Of Weir, PA11 3AF

Tel: 01505 691 400

Email: bridgeofweir@corumproperty.co.uk

www.corumproperty.co.uk